



NC DEPARTMENT OF TRANSPORTATION
 DIVISION OF HIGHWAYS
 STRUCTURE MANAGEMENT UNIT

ATTENTION: **prompt action request; sketches updated**

Structure Safety Report

Routine Element Inspection - Contract

STRUCTURE NUMBER: 110137 SAP STRUCTURE NO: 0120137 FHWA STRUCTURE NO: 00000000230137

DIVISION: 13 COUNTY: BURKE INSPECTION DATE: 08/29/2023 FREQUENCY: 24 MONTHS

FACILITY CARRIED: SR1924 MILE POST: _____

LOCATION: 0.01 MI.N.JCT.SR1979

FEATURE INTERSECTED: I-40

LATITUDE: 35° 43' 10.05" LONGITUDE: 81° 39' 50.52"

SUPERSTRUCTURE: REINFORCED CONCRETE FLOOR ON I-BEAMS

SUBSTRUCTURE: E.BTS:RC CAPS/PPC PILES;INT.BTS:RCP&BEAM

SPANS: 4 SPANS. SEE SPAN PROFILE SHEET FOR SPAN DETAILS

FRACTURE CRITICAL TEMPORARY SHORING SCOUR CRITICAL SCOUR PLAN OF ACTION

GRADES: (Inspector/NBI Coding) DECK 6/6 SUPERSTRUCTURE 6/6 SUBSTRUCTURE 6/6 CULVERT N/N

POSTED SV: Not Posted POSTED TTST: Not Posted

OTHER SIGNS PRESENT: none



| Sign noticed issued for | Number Required |
|----------------------------------|-----------------|
| <u>NO</u> WEIGHT LIMIT | <u>0</u> |
| <u>NO</u> DELINEATORS | <u>0</u> |
| <u>NO</u> NARROW BRIDGE | <u>0</u> |
| <u>NO</u> ONE LANE BRIDGE | <u>0</u> |
| <u>NO</u> LOW CLEARANCE | <u>0</u> |

DIRECTION OF INSPECTION S-N

DIRECTION MATCHES PLANS _____

south approach looking north

| | | |
|--------------------------------|---------------|-------------------------------|
| INSPECTED BY Juan Rodriguez | SIGNATURE | ASSISTED BY Hector Bonilla |
|--------------------------------|---------------|-------------------------------|

NATIONAL BRIDGE INVENTROY ----- STRUCTURE INVENTORY AND APPRAISAL

11/17/2023

IDENTIFICATION

(1) STATE NAME NORTH CAROLINA BRIDGE 110137
 (8) STRUCTURE NUMBER (FEDERAL) 0230137
 (5) INVENTORY ROUTE (ON/UNDER) ON 31019240
 (2) STATE HIGHWAY DEPARTMENT DISTRICT 13
 (3) COUNTY CODE (FEDERAL) 23 (4) PLACE CODE 44400
 (6) FEATURE INTERSECTED I-40
 (7) FACILITY CARRIED SR1924
 (9) LOCATION 0.01 MI.N.JCT.SR1979
 (11) MILEPOINT 0.0
 (12) BASE HIGHWAY NETWORK 0
 (13) LRS INVENTORY ROUTE & SUBROUTE 0
 (16) LATITUDE 35° 43' 10.05" (17) LONGITUDE 81° 39' 50.52"
 (98) BORDER BRIDGE STATE CODE PERCENT SHARED
 (99) BORDER BRIDGE STRUCTURE NUMBER

SUFFICIENCY RATING 78.30

STATUS =

CLASSIFICATION **CODE**

(112) NBIS BRIDGE SYSTEM Y
 (104) HIGHWAY SYSTEM Inventory Route not on NHS 0
 (26) FUNCTIONAL CLASS Urban Minor Collector 16
 (100) STRAHNET HIGHWAY Not a STRAHNET Route 0
 (101) PARALLEL STRUCTURE 0
 (102) DIRECTION OF TRAFFIC 2-way traffic 2
 (103) TEMPORARY STRUCTURE
 (110) DESIGNATED NATIONAL NETWORK - on national network for trucks 0
 (20) TOLL On Free Road 3
 (21) MAINT - 01
 (22) OWNER - 01
 (37) HISTORICAL SIGNIFICANCE - 5

STRUCTURE TYPE AND MATERIAL

(43) STRUCTURE TYPE MAIN Steel
 TYPE Stringer/Multi-beam or girder CODE 302
 (44) STRUCTURE TYPE APPROACH
 TYPE CODE
 (45) NUMBER OF SPANS IN MAIN UNIT 4
 (46) NUMBER OF SPANS IN APPROACH 0
 (107) DECK STRUCTURE TYPE CODE 1
 (108)WEARING SURFACE/PROTECTIVE SYSTEM
 (A) TYPE OF WEARING SURFACE CODE 6
 (B) TYPE OF MEMBRANE CODE 0
 (C) TYPE OF DECK PROTECTION CODE 0

CONDITION **CODE**

(58) DECK 6
 (59) SUPERSTRUCTURE 6
 (60) SUBSTRUCTURE 6
 (61) CHANNEL & CHANNEL PROTECTION N
 (62) CULVERTS N

LOAD RATING AND POSTING **CODE**

(31) DESIGN LOAD HS 15 3
 (63) OPERATING RATING METHOD - Load Factor 1
 (64) OPERATING RATING - HS-26 47
 (65) INVENTORY RATING METHOD - 1
 (66) INVENTORY RATING HS-16 28
 (70) BRIDGE POSTING No Posting Required 5
 (41) STRUCTURE OPEN, POSTED, OR CLOSED DESCRIPTION Open, no restriction A

AGE AND SERVICE

(27) YEAR BUILT 1957
 (106) YEAR RECONSTRUCTED 0
 (42) TYPE OF SERVICE ON - Highway - Pedestrian
 OFF - Highway CODE 51
 (28) LANES ON STRUCTURE 2 LANES UNDER STRUCTURE 8
 (29) AVERAGE DAILY TRAFFIC 2300
 (30) YEAR OF ADT 2019 (109) TRUCK ADT PCT 6
 (19) BYPASS OR DETOUR LENGTH 4.0

APPRAISAL **CODE**

(67) STRUCTURAL EVALUATION 6
 (68) DECK GEOMETRY N
 (69) UNDERCLEARANCES, VERT & HORIZ 4
 (71) WATERWAY ADEQUACY N
 (72) APPROACH ROADWAY ALIGNMENT 8
 (36) TRAFFIC SAFETY FEATURES N
 (113) SCOUR CRITICAL BRIDGES N

GEOMETRIC DATA

(48) LENGTH OF MAXIMUM SPAN 74.0
 (49) STRUCTURE LENGTH 277.0
 (50) CURB OR SIDEWALK: LEFT 3.3 RIGHT 3.3
 (51) BRIDGE ROADWAY WIDTH, CURB TO CURB 28.0
 (52) DECK WIDTH OUT TO OUT 36.0
 (32) APPROACH ROADWAY WITH (W/ SHOULDERS) 33.0
 (33) BRIDGE MEDIAN CODE 6
 (34) SKEW 41 (35) STRUCTURE FLARED 0111
 (10) INVENTORY ROUTE MIN VERT CLEAR 999.9
 (47) INVENTORY ROUTE TOTAL HORIZ CLEAR 0.0
 (53) MIN VERT CLEAR OVER BRIDGE RDWY 999.9
 (54) MIN VERT UNDERCLEAR: REFERENCE H 15.2
 (55) MIN LAT UNDERCLEARANCE RT: REFERENCE H 16.2
 (56) MIN LAT UNDERCLEARANCE LT: 13.8

PROPOSED IMPROVEMENTS

(75) TYPE OF WORK CODE
 (76) LENGTH OF STRUCTURE IMPROVEMENT
 (94) BRIDGE IMPROVEMENT COST
 (95) ROADWAY IMPROVEMENT COST
 (96) TOTAL PROJECT COST
 (97) YEAR OF IMPROVEMENT COST ESTIMATE
 (114) FUTURE ADT 4,600 YEAR OF FUTURE ADT 2040

NAVIGATION DATA

(38) NAVIGATION CONTROL - CODE 6
 (111) PIER PROTECTION CODE
 (39) NAVIGATION VERTICAL CLEARANCE 0.0
 (116) VERT - LIFT BRIDGE NAV MIN VERT CLEAR 0.0
 (40) NAVIGATION HORIZONTAL CLEARANCE 0.0

INSPECTION

(90) INSPECTION DATE 08/23 (91) FREQUENCY 24
 (92) CRITICAL FEATURE INSPECTION (93) CFI DATE
 A) FRACTURE CRIT DETAIL A)
 B) UNDERWATER INSP B)
 C) OTHER SPECIAL INSP C)

SCOUR

| Span Number | Facility Carried | Inventory Route | Maximum Minimum Vertical Clearance | Milepoint | Base Highway | LRS Inventory Route | Functional Classification | Number of Lanes | Average Daily Traffic | Year of Average Daily Traffic | Total Horizontal Clearance | See Note Below | | | | | STRAHNET Highway | Direction of Traffic | National Highway System | National Truck Network |
|-------------|------------------|-----------------|------------------------------------|-----------|--------------|---------------------|---------------------------|-----------------|-----------------------|-------------------------------|----------------------------|-------------------|---------------------------------|-------------------------------|-----------------------------|--------------------------------|------------------|----------------------|--------------------------|--------------------------|
| | | | | | | | | | | | | Reference Feature | Minimum Vertical Underclearance | Righth Lateral Underclearance | Left Lateral Underclearance | Underclearance Appraisal Grade | | | | |
| | 7 | 5 | 10 | 11 | 12 | 13 | 26 | 28 | 29 | 30 | 47 | 54A | 54 | 55 | 56 | 69 | 100 | 102 | 104 | 110 |
| 2 | I 40 E | 11000400 | 18.5 | 104.8 | 1 | 10040 | 11 | 2 | 25000 | 2019 | 42.8 | H | 17.5 | 16.7 | 13.8 | 6 | | 1 | <input type="checkbox"/> | <input type="checkbox"/> |
| 3 | I 40 WBL | 11000400 | 16.0 | 104.8 | 1 | 10040 | 11 | 2 | 25000 | 2019 | 43.4 | H | 15.2 | 16.2 | 13.8 | 4 | | 1 | <input type="checkbox"/> | <input type="checkbox"/> |

Note: Items 54, 55, and 56 are not reported FHWA under route data points but are collected for each under route to determine the minimum value for Underclearance Appraisal Item 69.

Superstructure Build Details

Span Number 1

Span Length 75.000

Skew 131.000

| Number of Items | Type of Component | Element Name | Quantity | Protective System Applied | Quantity (Sq Ft) |
|-----------------|--------------------------|------------------------------------|------------------|---|------------------|
| 2 | Concrete Railing | Reinforced Concrete Bridge Railing | 150 Feet | | |
| 5 | Fixed Bearing | Fixed Bearing | 5 Each | Legacy Non Lead Primer System with various Topcoats | 5 |
| 1 | Asphalt Wearing Surface | Wearing Surface | 2100 Square Feet | | |
| 1 | Reinforced Concrete Deck | Reinforced Concrete Deck | 2700 Square Feet | | |
| 5 | Movable Bearing | Movable Bearing | 5 Each | Legacy Non Lead Primer System with various Topcoats | 5 |
| 5 | Plate Girder | Steel Open Girder/Beam | 370 Feet | Legacy Non Lead Primer System with various Topcoats | 3675 |

Span Number 2

Span Length 75.000

Skew 131.000

| Number of Items | Type of Component | Element Name | Quantity | Protective System Applied | Quantity (Sq Ft) |
|-----------------|--------------------------|------------------------------------|------------------|---|------------------|
| 2 | Concrete Railing | Reinforced Concrete Bridge Railing | 150 Feet | | |
| 5 | Plate Girder | Steel Open Girder/Beam | 375 Feet | Legacy Non Lead Primer System with various Topcoats | 3705 |
| 5 | Fixed Bearing | Fixed Bearing | 5 Each | Legacy Non Lead Primer System with various Topcoats | 5 |
| 5 | Movable Bearing | Movable Bearing | 5 Each | Legacy Non Lead Primer System with various Topcoats | 5 |
| 1 | Reinforced Concrete Deck | Reinforced Concrete Deck | 2700 Square Feet | | |
| 1 | Asphalt Wearing Surface | Wearing Surface | 2100 Square Feet | | |
| 1 | Standard Joint | Pourable Joint Seal | 38 Feet | | |

Span Number 3

Span Length 75.000

Skew 131.000

| Number of Items | Type of Component | Element Name | Quantity | Protective System Applied | Quantity (Sq Ft) |
|-----------------|--------------------------|------------------------------------|------------------|---|------------------|
| 2 | Concrete Railing | Reinforced Concrete Bridge Railing | 150 Feet | | |
| 1 | Reinforced Concrete Deck | Reinforced Concrete Deck | 2700 Square Feet | | |
| 5 | Movable Bearing | Movable Bearing | 5 Each | Legacy Non Lead Primer System with various Topcoats | 5 |
| 5 | Plate Girder | Steel Open Girder/Beam | 375 Feet | Legacy Non Lead Primer System with various Topcoats | 3705 |

Superstructure Build Details

| | | | | |
|---|-------------------------|---------------------|------------------|---|
| 1 | Standard Joint | Pourable Joint Seal | 38 Feet | |
| 5 | Fixed Bearing | Fixed Bearing | 5 Each | Legacy Non Lead Primer System with various Topcoats |
| 1 | Asphalt Wearing Surface | Wearing Surface | 2100 Square Feet | |

Span Number 4

Span Length 52.000

Skew 131.000

| Number of Items | Type of Component | Element Name | Quantity | Protective System Applied | Quantity (Sq Ft) |
|-----------------|--------------------------|------------------------------------|------------------|---|------------------|
| 5 | Movable Bearing | Movable Bearing | 5 Each | Legacy Non Lead Primer System with various Topcoats | 5 |
| 5 | Plate Girder | Steel Open Girder/Beam | 255 Feet | Legacy Non Lead Primer System with various Topcoats | 2535 |
| 1 | Standard Joint | Pourable Joint Seal | 38 Feet | | |
| 1 | Asphalt Wearing Surface | Wearing Surface | 1456 Square Feet | | |
| 1 | Reinforced Concrete Deck | Reinforced Concrete Deck | 1872 Square Feet | | |
| 2 | Concrete Railing | Reinforced Concrete Bridge Railing | 104 Feet | | |
| 5 | Fixed Bearing | Fixed Bearing | 5 Each | Legacy Non Lead Primer System with various Topcoats | 5 |

Structure Element Scoring

Structure Number: 110137

Inspection Date 8/29/2023

| Element Number | Parent Number | Element Name | Location | Total Quantity | Level 1 Quantity | Level 2 Quantity | Level 3 Quantity | Level 4 Quantity |
|----------------|---------------|--------------------------------------|-------------------|----------------|------------------|------------------|------------------|------------------|
| 12 | | Reinforced Concrete Deck | Deck | 9,972 | 8,933 | 500 | 539 | 0 |
| 107 | | Steel Open Girder/Beam | Beam | 1,375 | 1,349 | 15 | 9 | 2 |
| 515 | 107 | Steel Protective Coating | Beam | 13,620 | 13,590 | 0 | 0 | 30 |
| 205 | | Reinforced Concrete Column | Piles and Columns | 9 | 4 | 3 | 2 | 0 |
| 215 | | Reinforced Concrete Abutment | Abutments | 106 | 96 | 0 | 10 | 0 |
| 220 | | Reinforced Concrete Pile Cap/Footing | Footing | 15 | 15 | 0 | 0 | 0 |
| 226 | | Prestressed Concrete Pile | Piles and Columns | 14 | 14 | 0 | 0 | 0 |
| 234 | | Reinforced Concrete Pier Cap | Caps | 245 | 93 | 27 | 122 | 3 |
| 301 | | Pourable Joint Seal | Expansion Joints | 114 | 114 | 0 | 0 | 0 |
| 311 | | Movable Bearing | Bearing Device | 20 | 0 | 19 | 1 | 0 |
| 515 | 311 | Steel Protective Coating | Bearing Device | 20 | 0 | 1 | 13 | 6 |
| 313 | | Fixed Bearing | Bearing Device | 20 | 1 | 18 | 1 | 0 |
| 515 | 313 | Steel Protective Coating | Bearing Device | 20 | 1 | 7 | 7 | 5 |
| 331 | | Reinforced Concrete Bridge Railing | Bridge Rail | 554 | 440 | 43 | 71 | 0 |
| 510 | | Wearing Surface | Wearing Surfaces | 7,756 | 7,309 | 299 | 148 | 0 |

Summary of Maintenance Needs

Maintenance By Defect

Structure Number: 110137

Inspection Date: 08/29/2023

| MMS Code | Element Name | Defect Name | Recommended Quantity |
|-----------------|------------------------------------|---|-----------------------------|
| 3326 | Reinforced Concrete Deck | Delamination/Spall | 9 Square Feet |
| 3326 | Reinforced Concrete Deck | Cracking (RC and Other) | 500 Square Feet |
| 3326 | Reinforced Concrete Deck | Efflorescence/Rust Staining | 530 Square Feet |
| 3314 | Steel Open Girder/Beam | Connection | 2 Feet |
| 3314 | Steel Open Girder/Beam | Corrosion | 11 Feet |
| 3348 | Reinforced Concrete Column | Delamination/Spall | 2 Each |
| 3350 | Reinforced Concrete Abutment | Delamination/Spall | 10 Feet |
| 3348 | Reinforced Concrete Pier Cap | Exposed Rebar | 9 Feet |
| 3348 | Reinforced Concrete Pier Cap | Efflorescence/Rust Staining | 28 Feet |
| 3348 | Reinforced Concrete Pier Cap | Delamination/Spall | 12 Feet |
| 3348 | Reinforced Concrete Pier Cap | Cracking (RC and Other) | 95 Feet |
| 3334 | Movable Bearing | Connection | 1 Each |
| 3334 | Movable Bearing | Corrosion | 1 Each |
| 3318 | Reinforced Concrete Bridge Railing | Delamination/Spall | 106 Feet |
| 2816 | Wearing Surface | Crack (Wearing Surface) | 447 Square Feet |
| 3342 | Steel Protective Coating | Effectiveness (Steel Protective Coatings) | 69 Square Feet |

Element Structure Maintenance Quantities

Structure Number: 110137

Inspection Date 08/29/2023

| Location | MMS Code | Description | Maint Quantity | Total Quantity | Severe Quantity | Poor Quantity | Fair Quantity | Good Quantity |
|-------------------|----------|---|----------------|----------------|-----------------|---------------|---------------|---------------|
| Beam | 3314 | Maintenance Steel Superstructure Components | 13 | 1375 | 2.000 | 9.000 | 15.000 | 1349.000 |
| Beam | 3342 | Clean and Paint Steel | 30 | 13620 | 30.000 | 0.000 | 0.000 | 13590.000 |
| Bearing Device | 3334 | Bridge Bearing | 1 | 20 | 0.000 | 1.000 | 19.000 | 0.000 |
| Bearing Device | 3334 | Bridge Bearing | 1 | 20 | 0.000 | 1.000 | 18.000 | 1.000 |
| Bearing Device | 3342 | Clean and Paint Steel | 20 | 20 | 6.000 | 13.000 | 1.000 | 0.000 |
| Bearing Device | 3342 | Clean and Paint Steel | 19 | 20 | 5.000 | 7.000 | 7.000 | 1.000 |
| Bridge Rail | 3318 | Maintenance of Concrete Bridge Rail | 106 | 554 | 0.000 | 71.000 | 43.000 | 440.000 |
| Deck | 3326 | Maintenance of Concrete Deck | 1039 | 9972 | 0.000 | 539.000 | 500.000 | 8933.000 |
| Expansion Joints | 3310 | Maintenance of Standard Bridge Expansion Joints | 0 | 114 | 0.000 | 0.000 | 0.000 | 114.000 |
| Wearing Surfaces | 2816 | Asphalt Surface Repair | 447 | 7756 | 0.000 | 148.000 | 299.000 | 7309.000 |
| Abutments | 3350 | Maintenance of Concrete Wings and Wall | 10 | 106 | 0.000 | 10.000 | 0.000 | 96.000 |
| Caps | 3348 | Maintenance of Concrete Substructure | 144 | 245 | 3.000 | 122.000 | 27.000 | 93.000 |
| Footing | 3348 | Maintenance of Concrete Substructure | 0 | 15 | 0.000 | 0.000 | 0.000 | 15.000 |
| Piles and Columns | 3348 | Maintenance of Concrete Substructure | 2 | 9 | 0.000 | 2.000 | 3.000 | 4.000 |
| Piles and Columns | 3348 | Maintenance of Concrete Substructure | 0 | 14 | 0.000 | 0.000 | 0.000 | 14.000 |

Priority Actions Request

Structure Number 110137

Span1

3326 Deck Reinforced Concrete Deck

| Priority Level | Defect Type | Quantity | Defect Description |
|----------------|--------------------|----------|--|
| 2 | Efflorescence/Rust | 500 | Span 1 Deck: (PAR) EFFLORESCENCE WITH SOME BUILDUP AT RANDOM THROUGHOUT UNDERSIDE OF DECK. |

Span3

3326 Deck Reinforced Concrete Deck

| Priority Level | Defect Type | Quantity | Defect Description |
|----------------|--------------------|----------|--|
| 2 | Delamination/Spall | 1 | Span 3 Deck: (PAR) SPAN 3 BOTTOM OF LEFT OVERHANG HAS A SURFACE SPALL AREA OVER BENT 2, 4 inch X 12 inch X 3/4 inch DEEP WITH REBAR EXPOSED. |

3314 Beam 2 Plate Girder

| Priority Level | Defect Type | Quantity | Defect Description |
|----------------|-------------|----------|---|
| 2 | Corrosion | 1 | Span 3 Beam 2: (PAR) at bent 2, corrosion with section loss: web adjacent to diaphragm (1/2 average remaining x 10 inch x 1.5 inch) |

Span4

3326 Deck Reinforced Concrete Deck

| Priority Level | Defect Type | Quantity | Defect Description |
|----------------|--------------------|----------|---|
| 2 | Efflorescence/Rust | 30 | Span 4 Deck: (PAR) in bay 1 near end bent 2, transverse crack (hairline x full bay width) with efflorescence and rust stains; in bay 4 near midspan, transverse cracks (hairline x full bay width) with efflorescence buildup |

3314 Beam 1 Plate Girder

| Priority Level | Defect Type | Quantity | Defect Description |
|----------------|-------------|----------|---|
| 2 | Corrosion | 0 | Span 4 Beam 1: (PAR) at bent 3, corrosion with section loss: web adjacent to diaphragm (9/16 inch average remaining x 11 inch x 2 inch); right stiffener (0.15 inch average remaining x full width x 3 inch) with corrosion holes (up to 1/4 inch diameter); west face top flange, rust scale |

3334 Beam 5 Plate Girder

| Priority Level | Defect Type | Quantity | Defect Description |
|----------------|-------------|----------|---|
| 2 | Connection | 1 | Span 4 Far Bearing 5: (PAR) right anchor rod, sheared/missing |

Priority Actions Request

Structure Number 110137

Bent 1

3348 Cap 1 Reinforced Concrete Pier Cap

| Priority Level | Defect Type | Quantity | Defect Description |
|----------------|---------------|----------|---|
| 2 | Exposed Rebar | 4 | Bent 1 Cap 1: (PAR) 10 INCH X 48 INCH X 2 INCH DEEP SPALL/DLMWITH EXPOSED REINFORCING NEAR TOP OF CAP, NORTH FACE BELOW BEAM 2 |
| 2 | Exposed Rebar | 1 | Bent 1 Cap 1: [PAR] 32 INCH X 15 INCH X 3 INCH SPALL WITH EXPOSED PRIMARY REINFORCING [SECTION LOSS UP TO 1/8 INCH] WITH ADJACENT DELAMINATION ON TOP NORTH FACE UNDER BAY 1. |
| 2 | Exposed Rebar | 1 | Bent 1 Cap 1: [PAR] 4 INCH X 7 INCH X 31 INCH NORTH FACE OF CAP HAS A SPALL AREA UNDER BEAM 3 WITH PRIMARY REBAR EXPOSED [SECTION LOSS UP TO 1/8 INCH] |

Bent 2

3348 Cap 1 Reinforced Concrete Pier Cap

| Priority Level | Defect Type | Quantity | Defect Description |
|----------------|--------------------|----------|---|
| 2 | Efflorescence/Rust | 10 | Bent 2 Cap 1: (PAR) 3 FOOT X UP TO 1/8 INCH LONGITUDINAL CRACK WITH RUST STAINING WITH ADJACENT DELAMINATIONS UP TO 5 FOOT X FULL WIDTH SOUTH AND BOTTOM FACES UNDER BAY 3 |
| 1 | Efflorescence/Rust | 8 | Bent 2 Cap 1: (PAR) BENT 2 NORTH FACE OF CAP HAS A HORIZONTAL CRACK [UP TO 1/8 INCH] WITH RUST STAIN WITH ADJACENT DELAMINATED AREA ALONG TOP EDGE OF CAP BETWEEN BEAM 4 AND BEAM 5 5 INCH TO 20 INCH DOWN FACE 88 INCH LONG AND 4 INCH ON TOP. |
| 2 | Exposed Rebar | 3 | Bent 2 Cap 1: (PAR) 3 FOOT X UP TO 7 INCH X 8 INCH X 3 INCH DEEP SPALL WITH EXPOSED REINFORCING WITH APPROXIMATELY 25 PERCENT LOSS AND ADJACENT DELAMINATION UNDER BAY 2 NORTH AND BOTTOM FACES. |

Bent 3

3348 Cap 1 Reinforced Concrete Pier Cap

| Priority Level | Defect Type | Quantity | Defect Description |
|----------------|--------------------|----------|---|
| 2 | Efflorescence/Rust | 10 | Bent 3 Cap 1: (PAR) UNDERSIDE OF CAP, 10 FOOT UP TO 1/16 INCH LONGITUDINAL CRACK WITH RUST STAINING UNDER BEAM 2, SIMILAR UNDER BEAM 4. |

Approach Guardrail and Barriers

3120 Approach Guardrail and Barriers Approach Guardrail and Barriers

| Priority Level | Defect Type | Quantity | Defect Description |
|----------------|-------------|----------|--|
| 2 | | 4 | (PAR) northeast guardrail 25 foot from termination, impact damage (4 foot) |
| 2 | | 6 | (PAR) northwest guardrail 25 foot from end bent 1, impact damage (6 foot) |

? Priority Action Request (PAR)
 1 Assigned Routine Maintenance
 2 Assigned Priority Maintenance
 3 Assigned Critical Find

Priority Actions Request

Structure Number 110137

2

1 (PAR) southeast guardrail termination, impact damage

Element Condition and Maintenance Data

Structure Number: 110137

Inspection Date: 08/29/2023

Span 1 Deck Reinforced Concrete Deck

| Element Number | Element Name | Total Qty | CS1 Qty | CS2 Qty | CS3 Qty | CS4 Qty | |
|----------------|--------------------------|-----------|---------|---------|---------|---------|-------------|
| 12 | Reinforced Concrete Deck | 2,700 | 2,200 | 0 | 500 | 0 | Square Feet |

| Element Number | Defect Type | Defect Description | CS | CS Qty | Maint Qty | |
|--|-----------------------------|---|----|--------|-----------|-------------|
| <input checked="" type="checkbox"/> 12 | Efflorescence/Rust Staining | (PAR) EFFLORESCENCE WITH SOME BUILDUP AT RANDOM THROUGHOUT UNDERSIDE OF DECK. | 3 | 500 | 500 | Square Feet |

General Comments

Span 1 Beam 1 Plate Girder

| Element Number | Element Name | Total Qty | CS1 Qty | CS2 Qty | CS3 Qty | CS4 Qty | |
|----------------|--------------------------|-----------|---------|---------|---------|---------|-------------|
| 107 | Steel Open Girder/Beam | 74 | 73 | 0 | 1 | 0 | Feet |
| 515 | Steel Protective Coating | 735 | 734 | 0 | 0 | 1 | Square Feet |

| Element Number | Defect Type | Defect Description | CS | CS Qty | Maint Qty | |
|---|---|--|----|--------|-----------|-------------|
| <input checked="" type="checkbox"/> 107 | Connection | at bent 1, bay 1 diaphragm, (2) spall/delamination (up to 2 foot x 8 inch x 2.5 inch deep) with exposed rusted rebar | 3 | | | Feet |
| <input checked="" type="checkbox"/> 107 | Corrosion | at bent 1, corrosion with section loss: web adjacent to diaphragm (9/16 average remaining x 3.5 inch x 8 inch) | 3 | 1 | 1 | Feet |
| <input checked="" type="checkbox"/> 515 | Effectiveness (Steel Protective Coatings) | corrosion with section loss | 4 | 1 | 1 | Square Feet |

General Comments

Span 1 Beam 2 Plate Girder

| Element Number | Element Name | Total Qty | CS1 Qty | CS2 Qty | CS3 Qty | CS4 Qty | |
|----------------|--------------------------|-----------|---------|---------|---------|---------|-------------|
| 107 | Steel Open Girder/Beam | 74 | 73 | 1 | 0 | 0 | Feet |
| 515 | Steel Protective Coating | 735 | 734 | 0 | 0 | 1 | Square Feet |

| Element Number | Defect Type | Defect Description | CS | CS Qty | Maint Qty | |
|---|---|--|----|--------|-----------|-------------|
| <input checked="" type="checkbox"/> 107 | Corrosion | at bent 1, web adjacent to diaphragm, rust scale (10 inch) | 2 | 1 | | Feet |
| <input checked="" type="checkbox"/> 515 | Effectiveness (Steel Protective Coatings) | rust scale | 4 | 1 | 1 | Square Feet |

General Comments

Span 1**Beam 4****Plate Girder**

| Element Number | Element Name | Total Qty | CS1 Qty | CS2 Qty | CS3 Qty | CS4 Qty |
|----------------|--------------------------|-----------|---------|---------|---------|---------------|
| 107 | Steel Open Girder/Beam | 74 | 73 | 1 | 0 | 0 Feet |
| 515 | Steel Protective Coating | 735 | 734 | 0 | 0 | 1 Square Feet |

| Element Number | Defect Type | Defect Description | CS | CS Qty | Maint Qty |
|---|---|--|----|--------|---------------|
| <input checked="" type="checkbox"/> 107 | Corrosion | at bent 1, web adjacent to diaphragm, rust scale (10 inch) | 2 | 1 | Feet |
| <input checked="" type="checkbox"/> 515 | Effectiveness (Steel Protective Coatings) | rust scale | 4 | 1 | 1 Square Feet |

General Comments**Span 1****Beam 5****Plate Girder**

| Element Number | Element Name | Total Qty | CS1 Qty | CS2 Qty | CS3 Qty | CS4 Qty |
|----------------|--------------------------|-----------|---------|---------|---------|---------------|
| 107 | Steel Open Girder/Beam | 74 | 73 | 0 | 1 | 0 Feet |
| 515 | Steel Protective Coating | 735 | 734 | 0 | 0 | 1 Square Feet |

| Element Number | Defect Type | Defect Description | CS | CS Qty | Maint Qty |
|---|---|--|----|--------|---------------|
| <input checked="" type="checkbox"/> 107 | Corrosion | at bent 1, corrosion with section loss: web adjacent to diaphragm (9/16 average remaining x 10 inch x 2 inch); left stiffener adjacent to diaphragm (0.25 inch average remaining x full width x 2 inch); left stiffener at base (0.27 inch average remaining x full width x 2 inch); top flange, rust scale (1 foot) | 3 | 1 | 1 Feet |
| <input checked="" type="checkbox"/> 515 | Effectiveness (Steel Protective Coatings) | rust scale/corrosion with section loss | 4 | 1 | 1 Square Feet |

General Comments**Span 1****Left Bridge Rail****Concrete Railing**

| Element Number | Element Name | Total Qty | CS1 Qty | CS2 Qty | CS3 Qty | CS4 Qty |
|----------------|------------------------------------|-----------|---------|---------|---------|---------|
| 331 | Reinforced Concrete Bridge Railing | 75 | 55 | 0 | 20 | 0 Feet |

| Element Number | Defect Type | Defect Description | CS | CS Qty | Maint Qty |
|---|-------------------------|--|----|--------|-----------|
| <input checked="" type="checkbox"/> 331 | Delamination/Spall | along length of rail, multiple spalls, up to 20 inch x 4 inch x 1 inch deep, some with exposed rusted reinforcing, no loss noted | 3 | 20 | 20 Feet |
| <input checked="" type="checkbox"/> 331 | Cracking (RC and Other) | along the length of sidewalk, transverse cracks (hairline x full width) and map cracks (hairline) at random | 2 | | Feet |

General Comments

Span 1 Right Bridge Rail**Concrete Railing**

| Element Number | Element Name | Total Qty | CS1 Qty | CS2 Qty | CS3 Qty | CS4 Qty |
|----------------|------------------------------------|-----------|---------|---------|---------|---------|
| 331 | Reinforced Concrete Bridge Railing | 75 | 60 | 15 | 0 | 0 Feet |

| Element Number | Defect Type | Defect Description | CS | CS Qty | Maint Qty |
|---|-------------------------|---|----|--------|-----------|
| <input checked="" type="checkbox"/> 331 | Cracking (RC and Other) | along the length of sidewalk, transverse cracks (hairline x full width) and map cracks (hairline) at random | 2 | | Feet |
| <input checked="" type="checkbox"/> 331 | Delamination/Spall | along length of rail, multiple spalls, up to 4 inch x 4 inch x 1 inch deep, some with exposed rusted reinforcing, no loss noted | 2 | 15 | 15 Feet |

General Comments**Span 1 Near Bearing 1****Fixed Bearing**

| Element Number | Element Name | Total Qty | CS1 Qty | CS2 Qty | CS3 Qty | CS4 Qty |
|----------------|--------------------------|-----------|---------|---------|---------|---------------|
| 313 | Fixed Bearing | 1 | 0 | 1 | 0 | 0 Each |
| 515 | Steel Protective Coating | 1 | 0 | 1 | 0 | 0 Square Feet |

| Element Number | Defect Type | Defect Description | CS | CS Qty | Maint Qty |
|---|---|--------------------|----|--------|---------------|
| <input checked="" type="checkbox"/> 313 | Corrosion | freckled rust | 2 | 1 | Each |
| <input checked="" type="checkbox"/> 515 | Effectiveness (Steel Protective Coatings) | freckled rust | 2 | 1 | 1 Square Feet |

General Comments**Span 1 Far Bearing 1****Movable Bearing**

| Element Number | Element Name | Total Qty | CS1 Qty | CS2 Qty | CS3 Qty | CS4 Qty |
|----------------|--------------------------|-----------|---------|---------|---------|---------------|
| 311 | Movable Bearing | 1 | 0 | 1 | 0 | 0 Each |
| 515 | Steel Protective Coating | 1 | 0 | 0 | 1 | 0 Square Feet |

| Element Number | Defect Type | Defect Description | CS | CS Qty | Maint Qty |
|---|---|-------------------------|----|--------|---------------|
| <input checked="" type="checkbox"/> 311 | Corrosion | surface rust/rust scale | 2 | 1 | Each |
| <input checked="" type="checkbox"/> 515 | Effectiveness (Steel Protective Coatings) | surface rust/rust scale | 3 | 1 | 1 Square Feet |

General Comments**Span 1 Far Bearing 2****Movable Bearing**

| Element Number | Element Name | Total Qty | CS1 Qty | CS2 Qty | CS3 Qty | CS4 Qty |
|----------------|--------------------------|-----------|---------|---------|---------|---------------|
| 311 | Movable Bearing | 1 | 0 | 1 | 0 | 0 Each |
| 515 | Steel Protective Coating | 1 | 0 | 0 | 1 | 0 Square Feet |

| Element Number | Defect Type | Defect Description | CS | CS Qty | Maint Qty |
|----------------|-------------|--------------------|----|--------|-----------|
|----------------|-------------|--------------------|----|--------|-----------|

Structure Number: 110137

Inspection Date: 08/29/2023

| | | | | | | |
|-------------------------------------|-----|---|--------------|---|---|---------------|
| <input checked="" type="checkbox"/> | 311 | Corrosion | surface rust | 2 | 1 | Each |
| <input checked="" type="checkbox"/> | 515 | Effectiveness (Steel Protective Coatings) | surface rust | 3 | 1 | 1 Square Feet |

General Comments

Span 1 Near Bearing 2

Fixed Bearing

| Element Number | Element Name | Total Qty | CS1 Qty | CS2 Qty | CS3 Qty | CS4 Qty |
|----------------|--------------------------|-----------|---------|---------|---------|---------------|
| 313 | Fixed Bearing | 1 | 0 | 1 | 0 | 0 Each |
| 515 | Steel Protective Coating | 1 | 0 | 0 | 1 | 0 Square Feet |

| Element Number | Defect Type | Defect Description | CS | CS Qty | Maint Qty |
|-------------------------------------|-------------|--|----|--------|---------------|
| <input checked="" type="checkbox"/> | 313 | Corrosion surface rust | 2 | 1 | Each |
| <input checked="" type="checkbox"/> | 515 | Effectiveness (Steel Protective Coatings) surface rust | 3 | 1 | 1 Square Feet |

General Comments

Span 1 Far Bearing 3

Movable Bearing

| Element Number | Element Name | Total Qty | CS1 Qty | CS2 Qty | CS3 Qty | CS4 Qty |
|----------------|--------------------------|-----------|---------|---------|---------|---------------|
| 311 | Movable Bearing | 1 | 0 | 1 | 0 | 0 Each |
| 515 | Steel Protective Coating | 1 | 0 | 1 | 0 | 0 Square Feet |

| Element Number | Defect Type | Defect Description | CS | CS Qty | Maint Qty |
|-------------------------------------|-------------|---|----|--------|---------------|
| <input checked="" type="checkbox"/> | 311 | Corrosion FRECKLED RUST ON THE BEARING PLATE. | 2 | 1 | Each |
| <input checked="" type="checkbox"/> | 515 | Effectiveness (Steel Protective Coatings) freckled rust | 2 | 1 | 1 Square Feet |

General Comments

Span 1 Near Bearing 3

Fixed Bearing

| Element Number | Element Name | Total Qty | CS1 Qty | CS2 Qty | CS3 Qty | CS4 Qty |
|----------------|--------------------------|-----------|---------|---------|---------|---------------|
| 313 | Fixed Bearing | 1 | 0 | 1 | 0 | 0 Each |
| 515 | Steel Protective Coating | 1 | 0 | 1 | 0 | 0 Square Feet |

| Element Number | Defect Type | Defect Description | CS | CS Qty | Maint Qty |
|-------------------------------------|-------------|---|----|--------|---------------|
| <input checked="" type="checkbox"/> | 313 | Corrosion freckled rust | 2 | 1 | Each |
| <input checked="" type="checkbox"/> | 515 | Effectiveness (Steel Protective Coatings) freckled rust | 2 | 1 | 1 Square Feet |

General Comments

Span 1 Far Bearing 4**Movable Bearing**

| Element Number | Element Name | Total Qty | CS1 Qty | CS2 Qty | CS3 Qty | CS4 Qty | |
|----------------|--------------------------|-----------|---------|---------|---------|---------|-------------|
| 311 | Movable Bearing | 1 | 0 | 1 | 0 | 0 | Each |
| 515 | Steel Protective Coating | 1 | 0 | 0 | 0 | 1 | Square Feet |

| Element Number | Defect Type | Defect Description | CS | CS Qty | Maint Qty | |
|---|---|-------------------------|----|--------|-----------|-------------|
| <input checked="" type="checkbox"/> 311 | Corrosion | surface rust/rust scale | 2 | 1 | | Each |
| <input checked="" type="checkbox"/> 515 | Effectiveness (Steel Protective Coatings) | surface rust/rust scale | 4 | 1 | 1 | Square Feet |

General Comments**Span 1 Far Bearing 5****Movable Bearing**

| Element Number | Element Name | Total Qty | CS1 Qty | CS2 Qty | CS3 Qty | CS4 Qty | |
|----------------|--------------------------|-----------|---------|---------|---------|---------|-------------|
| 311 | Movable Bearing | 1 | 0 | 1 | 0 | 0 | Each |
| 515 | Steel Protective Coating | 1 | 0 | 0 | 0 | 1 | Square Feet |

| Element Number | Defect Type | Defect Description | CS | CS Qty | Maint Qty | |
|---|---|-------------------------|----|--------|-----------|-------------|
| <input checked="" type="checkbox"/> 311 | Corrosion | surface rust/rust scale | 2 | 1 | | Each |
| <input checked="" type="checkbox"/> 515 | Effectiveness (Steel Protective Coatings) | surface rust/rust scale | 4 | 1 | 1 | Square Feet |

General Comments**Span 1 Near Bearing 5****Fixed Bearing**

| Element Number | Element Name | Total Qty | CS1 Qty | CS2 Qty | CS3 Qty | CS4 Qty | |
|----------------|--------------------------|-----------|---------|---------|---------|---------|-------------|
| 313 | Fixed Bearing | 1 | 0 | 1 | 0 | 0 | Each |
| 515 | Steel Protective Coating | 1 | 0 | 1 | 0 | 0 | Square Feet |

| Element Number | Defect Type | Defect Description | CS | CS Qty | Maint Qty | |
|---|---|--------------------|----|--------|-----------|-------------|
| <input checked="" type="checkbox"/> 313 | Corrosion | freckled rust | 2 | 1 | | Each |
| <input checked="" type="checkbox"/> 515 | Effectiveness (Steel Protective Coatings) | freckled rust | 2 | 1 | 1 | Square Feet |

General Comments**Span 1 Wearing Surface****Asphalt Wearing Surface**

| Element Number | Element Name | Total Qty | CS1 Qty | CS2 Qty | CS3 Qty | CS4 Qty | |
|----------------|-----------------|-----------|---------|---------|---------|---------|-------------|
| 510 | Wearing Surface | 2,100 | 1,976 | 50 | 74 | 0 | Square Feet |

| Element Number | Defect Type | Defect Description | CS | CS Qty | Maint Qty | |
|---|-------------------------|--|----|--------|-----------|-------------|
| <input checked="" type="checkbox"/> 510 | Crack (Wearing Surface) | at end bent 1 and bent 1, transverse cracks (up to 1/16 inch x full roadway width) | 3 | 74 | 74 | Square Feet |

Structure Number: **110137**

Inspection Date: **08/29/2023**

| | | | | | | | |
|-------------------------------------|------------|--|---|---|----|----|-------------|
| <input checked="" type="checkbox"/> | 510 | Crack (Wearing Surface) | throughout asphalt wearing surface, transverse and longitudinal cracks (up to 1/32 inch x 5 foot) at random | 2 | 50 | 50 | Square Feet |
| <input checked="" type="checkbox"/> | 510 | Patched Area/Pothole (Wearing Surface) | PREVIOUSLY REPAIRED SCATTERED AREAS WHERE THE ASPHALT IS BREAKING UP AND SUNKEN IN IN BOTH LEFT AND RIGHT LANES | 1 | | | Square Feet |

General Comments

Span 2 Beam 1
Plate Girder

| Element Number | Element Name | Total Qty | CS1 Qty | CS2 Qty | CS3 Qty | CS4 Qty | |
|----------------|--------------------------|-----------|---------|---------|---------|---------|-------------|
| 107 | Steel Open Girder/Beam | 75 | 73 | 2 | 0 | 0 | Feet |
| 515 | Steel Protective Coating | 741 | 739 | 0 | 0 | 2 | Square Feet |

| Element Number | Defect Type | Defect Description | CS | CS Qty | Maint Qty | |
|-------------------------------------|-------------|---|----|--------|-----------|---------------|
| <input checked="" type="checkbox"/> | 107 | Corrosion | | | | Feet |
| | | at bent 1, web adjacent to diaphragm, rust scale (10 inch) | 2 | 1 | | |
| <input checked="" type="checkbox"/> | 107 | Corrosion | | | | Feet |
| | | at bent 2, pitting with corrosion reactivating: web adjacent to diaphragm (1/16 inch deep x 10 inch x 2 inch) | 2 | 1 | | |
| <input checked="" type="checkbox"/> | 515 | Effectiveness (Steel Protective Coatings) | | | | 2 Square Feet |
| | | rust scale/section loss | 4 | 2 | | |

General Comments

Span 2 Beam 2
Plate Girder

| Element Number | Element Name | Total Qty | CS1 Qty | CS2 Qty | CS3 Qty | CS4 Qty | |
|----------------|--------------------------|-----------|---------|---------|---------|---------|-------------|
| 107 | Steel Open Girder/Beam | 75 | 73 | 1 | 1 | 0 | Feet |
| 515 | Steel Protective Coating | 741 | 739 | 0 | 0 | 2 | Square Feet |

| Element Number | Defect Type | Defect Description | CS | CS Qty | Maint Qty | |
|-------------------------------------|-------------|---|----|--------|-----------|---------------|
| <input checked="" type="checkbox"/> | 107 | Corrosion | | | | 1 Feet |
| | | at bent 2, corrosion with section loss: web adjacent to diaphragm (5/8 average remaining x 6 inch x 1 inch) | 3 | 1 | | |
| <input checked="" type="checkbox"/> | 107 | Corrosion | | | | Feet |
| | | at bent 1, web adjacent to diaphragm, rust scale (10 inch) | 2 | 1 | | |
| <input checked="" type="checkbox"/> | 515 | Effectiveness (Steel Protective Coatings) | | | | 2 Square Feet |
| | | rust scale/corrosion with section loss | 4 | 2 | | |

General Comments

Span 2 Beam 3
Plate Girder

| Element Number | Element Name | Total Qty | CS1 Qty | CS2 Qty | CS3 Qty | CS4 Qty | |
|----------------|--------------------------|-----------|---------|---------|---------|---------|-------------|
| 107 | Steel Open Girder/Beam | 75 | 74 | 1 | 0 | 0 | Feet |
| 515 | Steel Protective Coating | 741 | 740 | 0 | 0 | 1 | Square Feet |

| Element Number | Defect Type | Defect Description | CS | CS Qty | Maint Qty | |
|-------------------------------------|-------------|--|----|--------|-----------|---------------|
| <input checked="" type="checkbox"/> | 107 | Corrosion | | | | Feet |
| | | at bent 2, web adjacent to diaphragm, rust scale (10 inch) | 2 | 1 | | |
| <input checked="" type="checkbox"/> | 515 | Effectiveness (Steel Protective Coatings) | | | | 1 Square Feet |
| | | rust scale | 4 | 1 | | |

General Comments**Span 2****Beam 4****Plate Girder**

| Element Number | Element Name | Total Qty | CS1 Qty | CS2 Qty | CS3 Qty | CS4 Qty |
|----------------|--------------------------|-----------|---------|---------|---------|---------------|
| 107 | Steel Open Girder/Beam | 75 | 74 | 1 | 0 | 0 Feet |
| 515 | Steel Protective Coating | 741 | 740 | 0 | 0 | 1 Square Feet |

| Element Number | Defect Type | Defect Description | CS | CS Qty | Maint Qty |
|---|---|---|----|--------|---------------|
| <input checked="" type="checkbox"/> 107 | Corrosion | at bent 2, web adjacent to diaphragm, rust scale (3 inch) | 2 | 1 | Feet |
| <input checked="" type="checkbox"/> 515 | Effectiveness (Steel Protective Coatings) | rust scale | 4 | 1 | 1 Square Feet |

General Comments**Span 2****Beam 5****Plate Girder**

| Element Number | Element Name | Total Qty | CS1 Qty | CS2 Qty | CS3 Qty | CS4 Qty |
|----------------|--------------------------|-----------|---------|---------|---------|---------------|
| 107 | Steel Open Girder/Beam | 75 | 74 | 0 | 1 | 0 Feet |
| 515 | Steel Protective Coating | 741 | 740 | 0 | 0 | 1 Square Feet |

| Element Number | Defect Type | Defect Description | CS | CS Qty | Maint Qty |
|---|---|--|----|--------|---------------|
| <input checked="" type="checkbox"/> 107 | Corrosion | at bent 2, corrosion with section loss: web (5/8 average remaining x 10 inch x full height); left stiffener (0.30 inch average remaining x full width x full height) | 3 | 1 | 1 Feet |
| <input checked="" type="checkbox"/> 515 | Effectiveness (Steel Protective Coatings) | corrosion with section loss | 4 | 1 | 1 Square Feet |

General Comments**Span 2****Expansion Joint 1****Standard Joint**

| Element Number | Element Name | Total Qty | CS1 Qty | CS2 Qty | CS3 Qty | CS4 Qty |
|----------------|---------------------|-----------|---------|---------|---------|---------|
| 301 | Pourable Joint Seal | 38 | 38 | 0 | 0 | 0 Feet |

| Element Number | Defect Type | Defect Description | CS | CS Qty | Maint Qty |
|------------------------------|------------------|--|----|--------|-----------|
| <input type="checkbox"/> 301 | Debris Impaction | MOVED TO ASPHALT WEARING SURFACE 8-21-2019 | 1 | | Feet |
| <input type="checkbox"/> 301 | Seal Adhesion | MOVED TO ASPHALT WEARING SURFACE 8-21-2019 | 1 | | Feet |

General Comments

COVERED BY ASPHALT WEARING SURFACE

Span 2 Left Bridge Rail**Concrete Railing**

| Element Number | Element Name | Total Qty | CS1 Qty | CS2 Qty | CS3 Qty | CS4 Qty |
|----------------|------------------------------------|-----------|---------|---------|---------|---------|
| 331 | Reinforced Concrete Bridge Railing | 75 | 63 | 12 | 0 | 0 Feet |

| Element Number | Defect Type | Defect Description | CS | CS Qty | Maint Qty |
|---|-------------------------|---|----|--------|-----------|
| <input checked="" type="checkbox"/> 331 | Cracking (RC and Other) | along the length of sidewalk, transverse cracks (hairline x full width) and map cracks (hairline) at random | 2 | | Feet |
| <input checked="" type="checkbox"/> 331 | Delamination/Spall | along length of rail, multiple spalls, up to 4 inch x 4 inch x 1 inch deep, some with exposed rusted reinforcing, no loss noted | 2 | 12 | 12 Feet |

General Comments**Span 2 Right Bridge Rail****Concrete Railing**

| Element Number | Element Name | Total Qty | CS1 Qty | CS2 Qty | CS3 Qty | CS4 Qty |
|----------------|------------------------------------|-----------|---------|---------|---------|---------|
| 331 | Reinforced Concrete Bridge Railing | 75 | 60 | 0 | 15 | 0 Feet |

| Element Number | Defect Type | Defect Description | CS | CS Qty | Maint Qty |
|---|-------------------------|--|----|--------|-----------|
| <input checked="" type="checkbox"/> 331 | Delamination/Spall | along length of rail, multiple spalls, up to 20 inch x 4 inch x 1 inch deep, some with exposed rusted reinforcing, no loss noted | 3 | 15 | 15 Feet |
| <input checked="" type="checkbox"/> 331 | Cracking (RC and Other) | along the length of sidewalk, transverse cracks (hairline x full width) and map cracks (hairline) at random | 2 | | Feet |

General Comments**Span 2 Near Bearing 1****Fixed Bearing**

| Element Number | Element Name | Total Qty | CS1 Qty | CS2 Qty | CS3 Qty | CS4 Qty |
|----------------|--------------------------|-----------|---------|---------|---------|---------------|
| 313 | Fixed Bearing | 1 | 0 | 1 | 0 | 0 Each |
| 515 | Steel Protective Coating | 1 | 0 | 0 | 1 | 0 Square Feet |

| Element Number | Defect Type | Defect Description | CS | CS Qty | Maint Qty |
|---|---|--------------------|----|--------|---------------|
| <input checked="" type="checkbox"/> 313 | Corrosion | surface rust | 2 | 1 | Each |
| <input checked="" type="checkbox"/> 515 | Effectiveness (Steel Protective Coatings) | surface rust | 3 | 1 | 1 Square Feet |

General Comments

Span 2 Far Bearing 1
Movable Bearing

| Element Number | Element Name | Total Qty | CS1 Qty | CS2 Qty | CS3 Qty | CS4 Qty | |
|----------------|--------------------------|-----------|---------|---------|---------|---------|-------------|
| 311 | Movable Bearing | 1 | 0 | 1 | 0 | 0 | Each |
| 515 | Steel Protective Coating | 1 | 0 | 0 | 1 | 0 | Square Feet |

| Element Number | Defect Type | Defect Description | CS | CS Qty | Maint Qty | |
|---|---|--------------------|----|--------|-----------|-------------|
| <input checked="" type="checkbox"/> 311 | Corrosion | surface rust | 2 | 1 | | Each |
| <input checked="" type="checkbox"/> 515 | Effectiveness (Steel Protective Coatings) | surface rust | 3 | 1 | 1 | Square Feet |

General Comments

Span 2 Near Bearing 2
Fixed Bearing

| Element Number | Element Name | Total Qty | CS1 Qty | CS2 Qty | CS3 Qty | CS4 Qty | |
|----------------|--------------------------|-----------|---------|---------|---------|---------|-------------|
| 313 | Fixed Bearing | 1 | 0 | 1 | 0 | 0 | Each |
| 515 | Steel Protective Coating | 1 | 0 | 0 | 1 | 0 | Square Feet |

| Element Number | Defect Type | Defect Description | CS | CS Qty | Maint Qty | |
|---|---|--------------------|----|--------|-----------|-------------|
| <input checked="" type="checkbox"/> 313 | Corrosion | surface rust | 2 | 1 | | Each |
| <input checked="" type="checkbox"/> 515 | Effectiveness (Steel Protective Coatings) | surface rust | 3 | 1 | 1 | Square Feet |

General Comments

Span 2 Far Bearing 2
Movable Bearing

| Element Number | Element Name | Total Qty | CS1 Qty | CS2 Qty | CS3 Qty | CS4 Qty | |
|----------------|--------------------------|-----------|---------|---------|---------|---------|-------------|
| 311 | Movable Bearing | 1 | 0 | 1 | 0 | 0 | Each |
| 515 | Steel Protective Coating | 1 | 0 | 0 | 1 | 0 | Square Feet |

| Element Number | Defect Type | Defect Description | CS | CS Qty | Maint Qty | |
|---|---|--------------------|----|--------|-----------|-------------|
| <input checked="" type="checkbox"/> 311 | Corrosion | surface rust | 2 | 1 | | Each |
| <input checked="" type="checkbox"/> 515 | Effectiveness (Steel Protective Coatings) | surface rust | 3 | 1 | 1 | Square Feet |

General Comments

Span 2 Near Bearing 3
Fixed Bearing

| Element Number | Element Name | Total Qty | CS1 Qty | CS2 Qty | CS3 Qty | CS4 Qty | |
|----------------|--------------------------|-----------|---------|---------|---------|---------|-------------|
| 313 | Fixed Bearing | 1 | 0 | 1 | 0 | 0 | Each |
| 515 | Steel Protective Coating | 1 | 0 | 1 | 0 | 0 | Square Feet |

| Element Number | Defect Type | Defect Description | CS | CS Qty | Maint Qty | |
|---|-------------|-------------------------------------|----|--------|-----------|------|
| <input checked="" type="checkbox"/> 313 | Corrosion | FRECKLED RUST ON THE BEARING PLATE. | 2 | 1 | | Each |

Structure Number: **110137**

Inspection Date: **08/29/2023**

| | | | | | | | |
|-------------------------------------|------------|---|---------------|---|---|---|-------------|
| <input checked="" type="checkbox"/> | 515 | Effectiveness (Steel Protective Coatings) | freckled rust | 2 | 1 | 1 | Square Feet |
|-------------------------------------|------------|---|---------------|---|---|---|-------------|

General Comments

Span 2 Far Bearing 3

Movable Bearing

| Element Number | Element Name | Total Qty | CS1 Qty | CS2 Qty | CS3 Qty | CS4 Qty | |
|----------------|--------------------------|-----------|---------|---------|---------|---------|-------------|
| 311 | Movable Bearing | 1 | 0 | 1 | 0 | 0 | Each |
| 515 | Steel Protective Coating | 1 | 0 | 0 | 1 | 0 | Square Feet |

| Element Number | Defect Type | Defect Description | CS | CS Qty | Maint Qty | |
|-------------------------------------|-------------|---|--------------|--------|-----------|---------------|
| <input checked="" type="checkbox"/> | 311 | Corrosion | surface rust | 2 | 1 | Each |
| <input checked="" type="checkbox"/> | 515 | Effectiveness (Steel Protective Coatings) | surface rust | 3 | 1 | 1 Square Feet |

General Comments

Span 2 Near Bearing 4

Fixed Bearing

| Element Number | Element Name | Total Qty | CS1 Qty | CS2 Qty | CS3 Qty | CS4 Qty | |
|----------------|--------------------------|-----------|---------|---------|---------|---------|-------------|
| 313 | Fixed Bearing | 1 | 0 | 1 | 0 | 0 | Each |
| 515 | Steel Protective Coating | 1 | 0 | 0 | 0 | 1 | Square Feet |

| Element Number | Defect Type | Defect Description | CS | CS Qty | Maint Qty | |
|-------------------------------------|-------------|---|-------------------------|--------|-----------|---------------|
| <input checked="" type="checkbox"/> | 313 | Corrosion | surface rust/rust scale | 2 | 1 | Each |
| <input checked="" type="checkbox"/> | 515 | Effectiveness (Steel Protective Coatings) | surface rust/rust scale | 4 | 1 | 1 Square Feet |

General Comments

Span 2 Far Bearing 4

Movable Bearing

| Element Number | Element Name | Total Qty | CS1 Qty | CS2 Qty | CS3 Qty | CS4 Qty | |
|----------------|--------------------------|-----------|---------|---------|---------|---------|-------------|
| 311 | Movable Bearing | 1 | 0 | 1 | 0 | 0 | Each |
| 515 | Steel Protective Coating | 1 | 0 | 0 | 1 | 0 | Square Feet |

| Element Number | Defect Type | Defect Description | CS | CS Qty | Maint Qty | |
|-------------------------------------|-------------|---|--------------|--------|-----------|---------------|
| <input checked="" type="checkbox"/> | 311 | Corrosion | surface rust | 2 | 1 | Each |
| <input checked="" type="checkbox"/> | 515 | Effectiveness (Steel Protective Coatings) | surface rust | 3 | 1 | 1 Square Feet |

General Comments

Span 2 Near Bearing 5
Fixed Bearing

| Element Number | Element Name | Total Qty | CS1 Qty | CS2 Qty | CS3 Qty | CS4 Qty | |
|----------------|--------------------------|-----------|---------|---------|---------|---------|-------------|
| 313 | Fixed Bearing | 1 | 0 | 1 | 0 | 0 | Each |
| 515 | Steel Protective Coating | 1 | 0 | 0 | 0 | 1 | Square Feet |

| Element Number | Defect Type | Defect Description | CS | CS Qty | Maint Qty | |
|---|---|-------------------------|----|--------|-----------|-------------|
| <input checked="" type="checkbox"/> 313 | Corrosion | surface rust/rust scale | 2 | 1 | | Each |
| <input checked="" type="checkbox"/> 515 | Effectiveness (Steel Protective Coatings) | surface rust/rust scale | 4 | 1 | 1 | Square Feet |

General Comments

Span 2 Far Bearing 5
Movable Bearing

| Element Number | Element Name | Total Qty | CS1 Qty | CS2 Qty | CS3 Qty | CS4 Qty | |
|----------------|--------------------------|-----------|---------|---------|---------|---------|-------------|
| 311 | Movable Bearing | 1 | 0 | 1 | 0 | 0 | Each |
| 515 | Steel Protective Coating | 1 | 0 | 0 | 1 | 0 | Square Feet |

| Element Number | Defect Type | Defect Description | CS | CS Qty | Maint Qty | |
|---|---|--------------------|----|--------|-----------|-------------|
| <input checked="" type="checkbox"/> 311 | Corrosion | surface rust | 2 | 1 | | Each |
| <input checked="" type="checkbox"/> 515 | Effectiveness (Steel Protective Coatings) | surface rust | 3 | 1 | 1 | Square Feet |

General Comments

Span 2 Wearing Surface
Asphalt Wearing Surface

| Element Number | Element Name | Total Qty | CS1 Qty | CS2 Qty | CS3 Qty | CS4 Qty | |
|----------------|-----------------|-----------|---------|---------|---------|---------|-------------|
| 510 | Wearing Surface | 2,100 | 1,963 | 100 | 37 | 0 | Square Feet |

| Element Number | Defect Type | Defect Description | CS | CS Qty | Maint Qty | |
|---|--|---|----|--------|-----------|-------------|
| <input checked="" type="checkbox"/> 510 | Crack (Wearing Surface) | at bent 2, transverse cracks (up to 1/16 inch x full roadway width) | 3 | 37 | 37 | Square Feet |
| <input checked="" type="checkbox"/> 510 | Crack (Wearing Surface) | throughout asphalt wearing surface, transverse and longitudinal cracks (up to 1/32 inch x 5 foot) at random | 2 | 100 | 100 | Square Feet |
| <input checked="" type="checkbox"/> 510 | Patched Area/Pothole (Wearing Surface) | PREVIOUSLY REPAIRED NUMEROUS SCATTERED AREAS WHERE THE ASPHALT IS BREAKING UP AND SUNKEN IN IN BOTH LEFT AND RIGHT LANES. | 1 | | | Square Feet |

General Comments

Span 3 Expansion Joint 2**Standard Joint**

| Element Number | Element Name | Total Qty | CS1 Qty | CS2 Qty | CS3 Qty | CS4 Qty |
|----------------|---------------------|-----------|---------|---------|---------|---------|
| 301 | Pourable Joint Seal | 38 | 38 | 0 | 0 | 0 Feet |

| Element Number | Defect Type | Defect Description | CS | CS Qty | Maint Qty |
|------------------------------|------------------|--|----|--------|-----------|
| <input type="checkbox"/> 301 | Debris Impaction | MOVED TO ASPHALT WEARING SURFACE 8-21-2019 | 1 | | Feet |
| <input type="checkbox"/> 301 | Seal Adhesion | MOVED TO ASPHALT WEARING SURFACE 8-21-2019 | 1 | | Feet |

General Comments

COVERED BY ASPHALT WEARING SURFACE

Span 3 Deck**Reinforced Concrete Deck**

| Element Number | Element Name | Total Qty | CS1 Qty | CS2 Qty | CS3 Qty | CS4 Qty |
|----------------|--------------------------|-----------|---------|---------|---------|---------------|
| 12 | Reinforced Concrete Deck | 2,700 | 2,499 | 200 | 1 | 0 Square Feet |

| Element Number | Defect Type | Defect Description | CS | CS Qty | Maint Qty |
|--|-------------------------|---|----|--------|-----------------|
| <input checked="" type="checkbox"/> 12 | Delamination/Spall | (PAR) SPAN 3 BOTTOM OF LEFT OVERHANG HAS A SURFACE SPALL AREA OVER BENT 2, 4 INCH X 12 INCH X 3/4 INCH DEEP WITH REBAR EXPOSED. | 3 | 1 | 1 Square Feet |
| <input checked="" type="checkbox"/> 12 | Cracking (RC and Other) | SPAN 3 BOTTOM OF DECK HAS SCATTERED AREAS IN ALL BAYS OF MAP CRACKING WITH EFFLORESCENCE | 2 | 200 | 200 Square Feet |

General Comments**Span 3 Beam 1****Plate Girder**

| Element Number | Element Name | Total Qty | CS1 Qty | CS2 Qty | CS3 Qty | CS4 Qty |
|----------------|--------------------------|-----------|---------|---------|---------|---------------|
| 107 | Steel Open Girder/Beam | 75 | 73 | 2 | 0 | 0 Feet |
| 515 | Steel Protective Coating | 741 | 735 | 0 | 0 | 6 Square Feet |

| Element Number | Defect Type | Defect Description | CS | CS Qty | Maint Qty |
|---|---|---|----|--------|---------------|
| <input checked="" type="checkbox"/> 107 | Connection | at bent 2, bay 1 end diaphragm, (2) spall/delamination (up to 3 foot x 10 inch x 2 inch deep) with exposed rusted rebar | 3 | | Feet |
| <input checked="" type="checkbox"/> 107 | Corrosion | at bent 2, pitting with corrosion reactivating: web adjacent to diaphragm (1/16 inch deep x 10 inch x 2 inch) | 2 | 1 | Feet |
| <input checked="" type="checkbox"/> 107 | Corrosion | at bent 3, web adjacent to diaphragm, rust scale (10 inch); top flange, surface rust/rust scale (1 foot) | 2 | 1 | Feet |
| <input checked="" type="checkbox"/> 107 | Damage | over right travel lane, impact scrapes | 2 | | Feet |
| <input checked="" type="checkbox"/> 515 | Effectiveness (Steel Protective Coatings) | over right travel lane, impact scrapes | 4 | 5 | 5 Square Feet |
| <input checked="" type="checkbox"/> 515 | Effectiveness (Steel Protective Coatings) | rust scale | 4 | 1 | 1 Square Feet |

General Comments

Span 3 **Beam 2**
Plate Girder

| Element Number | Element Name | Total Qty | CS1 Qty | CS2 Qty | CS3 Qty | CS4 Qty |
|----------------|--------------------------|-----------|---------|---------|---------|---------------|
| 107 | Steel Open Girder/Beam | 75 | 73 | 0 | 1 | 1 Feet |
| 515 | Steel Protective Coating | 741 | 739 | 0 | 0 | 2 Square Feet |

| Element Number | Defect Type | Defect Description | CS | CS Qty | Maint Qty |
|---|---|--|----|--------|---------------|
| <input checked="" type="checkbox"/> 107 | Corrosion | (PAR) at bent 2, corrosion with section loss: web adjacent to diaphragm (1/2 average remaining x 10 inch x 1.5 inch) | 4 | 1 | 1 Feet |
| <input checked="" type="checkbox"/> 107 | Corrosion | at bent 3, corrosion with section loss: web adjacent to diaphragm (9/16 average remaining x 10 inch x 2 inch) | 3 | 1 | 1 Feet |
| <input checked="" type="checkbox"/> 515 | Effectiveness (Steel Protective Coatings) | corrosion with section loss | 4 | 2 | 2 Square Feet |

General Comments

Span 3 **Beam 3**
Plate Girder

| Element Number | Element Name | Total Qty | CS1 Qty | CS2 Qty | CS3 Qty | CS4 Qty |
|----------------|--------------------------|-----------|---------|---------|---------|---------------|
| 107 | Steel Open Girder/Beam | 75 | 73 | 1 | 1 | 0 Feet |
| 515 | Steel Protective Coating | 741 | 739 | 0 | 0 | 2 Square Feet |

| Element Number | Defect Type | Defect Description | CS | CS Qty | Maint Qty |
|---|---|--|----|--------|---------------|
| <input checked="" type="checkbox"/> 107 | Corrosion | at bent 3, pitting with corrosion reactivating: web (up to 1/8 inch deep x 10 inch x 6 inch) | 3 | 1 | 1 Feet |
| <input checked="" type="checkbox"/> 107 | Corrosion | at bent 2, web adjacent to diaphragm, rust scale (8 inch) | 2 | 1 | Feet |
| <input checked="" type="checkbox"/> 515 | Effectiveness (Steel Protective Coatings) | rust scale/corrosion with section loss | 4 | 2 | 2 Square Feet |

General Comments

Span 3 **Beam 4**
Plate Girder

| Element Number | Element Name | Total Qty | CS1 Qty | CS2 Qty | CS3 Qty | CS4 Qty |
|----------------|--------------------------|-----------|---------|---------|---------|---------------|
| 107 | Steel Open Girder/Beam | 75 | 73 | 2 | 0 | 0 Feet |
| 515 | Steel Protective Coating | 741 | 739 | 0 | 0 | 2 Square Feet |

| Element Number | Defect Type | Defect Description | CS | CS Qty | Maint Qty |
|---|---|--|----|--------|---------------|
| <input checked="" type="checkbox"/> 107 | Corrosion | at bent 2, web adjacent to diaphragm, rust scale (10 inch) | 2 | 1 | Feet |
| <input checked="" type="checkbox"/> 107 | Corrosion | at bent 3, web adjacent to diaphragm, rust scale (10 inch) | 2 | 1 | Feet |
| <input checked="" type="checkbox"/> 515 | Effectiveness (Steel Protective Coatings) | rust scale | 4 | 2 | 2 Square Feet |

General Comments

Span 3**Beam 5****Plate Girder**

| Element Number | Element Name | Total Qty | CS1 Qty | CS2 Qty | CS3 Qty | CS4 Qty |
|----------------|--------------------------|-----------|---------|---------|---------|---------------|
| 107 | Steel Open Girder/Beam | 75 | 73 | 1 | 1 | 0 Feet |
| 515 | Steel Protective Coating | 741 | 739 | 0 | 0 | 2 Square Feet |

| Element Number | Defect Type | Defect Description | CS | CS Qty | Maint Qty |
|---|---|---|----|--------|---------------|
| <input checked="" type="checkbox"/> 107 | Corrosion | at bent 3, corrosion with section loss: web adjacent to diaphragm (9/16 average remaining x 10 inch x 2.5 inch); left stiffener (0.25 inch average remaining x full width x 2.5 inch) | 3 | 1 | 1 Feet |
| <input checked="" type="checkbox"/> 107 | Corrosion | at bent 2, web adjacent to diaphragm, rust scale (10 inch) | 2 | 1 | Feet |
| <input checked="" type="checkbox"/> 515 | Effectiveness (Steel Protective Coatings) | rust scale/corrosion with section loss | 4 | 2 | 2 Square Feet |

General Comments**Span 3****Left Bridge Rail****Concrete Railing**

| Element Number | Element Name | Total Qty | CS1 Qty | CS2 Qty | CS3 Qty | CS4 Qty |
|----------------|------------------------------------|-----------|---------|---------|---------|---------|
| 331 | Reinforced Concrete Bridge Railing | 75 | 67 | 8 | 0 | 0 Feet |

| Element Number | Defect Type | Defect Description | CS | CS Qty | Maint Qty |
|---|-------------------------|---|----|--------|-----------|
| <input checked="" type="checkbox"/> 331 | Cracking (RC and Other) | along the length of sidewalk, transverse cracks (hairline x full width) and map cracks (hairline) at random | 2 | | Feet |
| <input checked="" type="checkbox"/> 331 | Delamination/Spall | along length of rail, multiple spalls, up to 4 inch x 4 inch x 1 inch deep, some with exposed rusted reinforcing, no loss noted | 2 | 8 | 8 Feet |

General Comments**Span 3****Right Bridge Rail****Concrete Railing**

| Element Number | Element Name | Total Qty | CS1 Qty | CS2 Qty | CS3 Qty | CS4 Qty |
|----------------|------------------------------------|-----------|---------|---------|---------|---------|
| 331 | Reinforced Concrete Bridge Railing | 75 | 55 | 0 | 20 | 0 Feet |

| Element Number | Defect Type | Defect Description | CS | CS Qty | Maint Qty |
|---|-------------------------|--|----|--------|-----------|
| <input checked="" type="checkbox"/> 331 | Delamination/Spall | along length of rail, multiple spalls, up to 16 inch x 4 inch x 1 inch deep, some with exposed rusted reinforcing, no loss noted | 3 | 20 | 20 Feet |
| <input checked="" type="checkbox"/> 331 | Cracking (RC and Other) | along the length of sidewalk, transverse cracks (hairline x full width) and map cracks (hairline) at random | 2 | | Feet |

General Comments

Span 3 Near Bearing 1
Fixed Bearing

| Element Number | Element Name | Total Qty | CS1 Qty | CS2 Qty | CS3 Qty | CS4 Qty | |
|----------------|--------------------------|-----------|---------|---------|---------|---------|-------------|
| 313 | Fixed Bearing | 1 | 0 | 1 | 0 | 0 | Each |
| 515 | Steel Protective Coating | 1 | 0 | 0 | 1 | 0 | Square Feet |

| Element Number | Defect Type | Defect Description | CS | CS Qty | Maint Qty | |
|---|---|--------------------|----|--------|-----------|-------------|
| <input checked="" type="checkbox"/> 313 | Corrosion | surface rust | 2 | 1 | | Each |
| <input checked="" type="checkbox"/> 515 | Effectiveness (Steel Protective Coatings) | surface rust | 3 | 1 | 1 | Square Feet |

General Comments

Span 3 Far Bearing 1
Movable Bearing

| Element Number | Element Name | Total Qty | CS1 Qty | CS2 Qty | CS3 Qty | CS4 Qty | |
|----------------|--------------------------|-----------|---------|---------|---------|---------|-------------|
| 311 | Movable Bearing | 1 | 0 | 1 | 0 | 0 | Each |
| 515 | Steel Protective Coating | 1 | 0 | 0 | 1 | 0 | Square Feet |

| Element Number | Defect Type | Defect Description | CS | CS Qty | Maint Qty | |
|---|---|--------------------|----|--------|-----------|-------------|
| <input checked="" type="checkbox"/> 311 | Corrosion | surface rust | 2 | 1 | | Each |
| <input checked="" type="checkbox"/> 515 | Effectiveness (Steel Protective Coatings) | surface rust | 3 | 1 | 1 | Square Feet |

General Comments

Span 3 Near Bearing 2
Fixed Bearing

| Element Number | Element Name | Total Qty | CS1 Qty | CS2 Qty | CS3 Qty | CS4 Qty | |
|----------------|--------------------------|-----------|---------|---------|---------|---------|-------------|
| 313 | Fixed Bearing | 1 | 0 | 1 | 0 | 0 | Each |
| 515 | Steel Protective Coating | 1 | 0 | 0 | 1 | 0 | Square Feet |

| Element Number | Defect Type | Defect Description | CS | CS Qty | Maint Qty | |
|---|---|--------------------|----|--------|-----------|-------------|
| <input checked="" type="checkbox"/> 313 | Corrosion | surface rust | 2 | 1 | | Each |
| <input checked="" type="checkbox"/> 515 | Effectiveness (Steel Protective Coatings) | surface rust | 3 | 1 | 1 | Square Feet |

General Comments

Span 3 Far Bearing 2
Movable Bearing

| Element Number | Element Name | Total Qty | CS1 Qty | CS2 Qty | CS3 Qty | CS4 Qty | |
|----------------|--------------------------|-----------|---------|---------|---------|---------|-------------|
| 311 | Movable Bearing | 1 | 0 | 1 | 0 | 0 | Each |
| 515 | Steel Protective Coating | 1 | 0 | 0 | 1 | 0 | Square Feet |

| Element Number | Defect Type | Defect Description | CS | CS Qty | Maint Qty | |
|---|-------------|--------------------|----|--------|-----------|------|
| <input checked="" type="checkbox"/> 311 | Corrosion | surface rust | 2 | 1 | | Each |

| | | | | | | | |
|-------------------------------------|------------|---|--------------|---|---|---|-------------|
| <input checked="" type="checkbox"/> | 515 | Effectiveness (Steel Protective Coatings) | surface rust | 3 | 1 | 1 | Square Feet |
|-------------------------------------|------------|---|--------------|---|---|---|-------------|

General Comments

Span 3 Near Bearing 3 Fixed Bearing

| Element Number | Element Name | Total Qty | CS1 Qty | CS2 Qty | CS3 Qty | CS4 Qty | |
|----------------|--------------------------|-----------|---------|---------|---------|---------|-------------|
| 313 | Fixed Bearing | 1 | 0 | 1 | 0 | 0 | Each |
| 515 | Steel Protective Coating | 1 | 0 | 0 | 0 | 1 | Square Feet |

| Element Number | Defect Type | Defect Description | CS | CS Qty | Maint Qty | |
|-------------------------------------|-------------|---|-------------------------|--------|-----------|---------------|
| <input checked="" type="checkbox"/> | 313 | Corrosion | surface rust/rust scale | 2 | 1 | Each |
| <input checked="" type="checkbox"/> | 515 | Effectiveness (Steel Protective Coatings) | surface rust/rust scale | 4 | 1 | 1 Square Feet |

General Comments

Span 3 Far Bearing 3 Movable Bearing

| Element Number | Element Name | Total Qty | CS1 Qty | CS2 Qty | CS3 Qty | CS4 Qty | |
|----------------|--------------------------|-----------|---------|---------|---------|---------|-------------|
| 311 | Movable Bearing | 1 | 0 | 1 | 0 | 0 | Each |
| 515 | Steel Protective Coating | 1 | 0 | 0 | 0 | 1 | Square Feet |

| Element Number | Defect Type | Defect Description | CS | CS Qty | Maint Qty | |
|-------------------------------------|-------------|---|------------|--------|-----------|---------------|
| <input checked="" type="checkbox"/> | 311 | Corrosion | rust scale | 2 | 1 | Each |
| <input checked="" type="checkbox"/> | 515 | Effectiveness (Steel Protective Coatings) | rust scale | 4 | 1 | 1 Square Feet |

General Comments

Span 3 Near Bearing 4 Fixed Bearing

| Element Number | Element Name | Total Qty | CS1 Qty | CS2 Qty | CS3 Qty | CS4 Qty | |
|----------------|--------------------------|-----------|---------|---------|---------|---------|-------------|
| 313 | Fixed Bearing | 1 | 0 | 1 | 0 | 0 | Each |
| 515 | Steel Protective Coating | 1 | 0 | 0 | 0 | 1 | Square Feet |

| Element Number | Defect Type | Defect Description | CS | CS Qty | Maint Qty | |
|-------------------------------------|-------------|---|-------------------------|--------|-----------|---------------|
| <input checked="" type="checkbox"/> | 313 | Corrosion | surface rust/rust scale | 2 | 1 | Each |
| <input checked="" type="checkbox"/> | 515 | Effectiveness (Steel Protective Coatings) | surface rust/rust scale | 4 | 1 | 1 Square Feet |

General Comments

Span 3 Far Bearing 4
Movable Bearing

| Element Number | Element Name | Total Qty | CS1 Qty | CS2 Qty | CS3 Qty | CS4 Qty | |
|----------------|--------------------------|-----------|---------|---------|---------|---------|-------------|
| 311 | Movable Bearing | 1 | 0 | 1 | 0 | 0 | Each |
| 515 | Steel Protective Coating | 1 | 0 | 0 | 1 | 0 | Square Feet |

| Element Number | Defect Type | Defect Description | CS | CS Qty | Maint Qty | |
|---|---|--------------------|----|--------|-----------|-------------|
| <input checked="" type="checkbox"/> 311 | Corrosion | surface rust | 2 | 1 | | Each |
| <input checked="" type="checkbox"/> 515 | Effectiveness (Steel Protective Coatings) | surface rust | 3 | 1 | 1 | Square Feet |

General Comments

Span 3 Near Bearing 5
Fixed Bearing

| Element Number | Element Name | Total Qty | CS1 Qty | CS2 Qty | CS3 Qty | CS4 Qty | |
|----------------|--------------------------|-----------|---------|---------|---------|---------|-------------|
| 313 | Fixed Bearing | 1 | 0 | 1 | 0 | 0 | Each |
| 515 | Steel Protective Coating | 1 | 0 | 0 | 1 | 0 | Square Feet |

| Element Number | Defect Type | Defect Description | CS | CS Qty | Maint Qty | |
|---|---|--------------------|----|--------|-----------|-------------|
| <input checked="" type="checkbox"/> 313 | Corrosion | surface rust | 2 | 1 | | Each |
| <input checked="" type="checkbox"/> 515 | Effectiveness (Steel Protective Coatings) | surface rust | 3 | 1 | 1 | Square Feet |

General Comments

Span 3 Far Bearing 5
Movable Bearing

| Element Number | Element Name | Total Qty | CS1 Qty | CS2 Qty | CS3 Qty | CS4 Qty | |
|----------------|--------------------------|-----------|---------|---------|---------|---------|-------------|
| 311 | Movable Bearing | 1 | 0 | 1 | 0 | 0 | Each |
| 515 | Steel Protective Coating | 1 | 0 | 0 | 0 | 1 | Square Feet |

| Element Number | Defect Type | Defect Description | CS | CS Qty | Maint Qty | |
|---|---|-------------------------|----|--------|-----------|-------------|
| <input checked="" type="checkbox"/> 311 | Corrosion | surface rust/rust scale | 2 | 1 | | Each |
| <input checked="" type="checkbox"/> 515 | Effectiveness (Steel Protective Coatings) | surface rust/rust scale | 4 | 1 | 1 | Square Feet |

General Comments

Span 3 Wearing Surface
Asphalt Wearing Surface

| Element Number | Element Name | Total Qty | CS1 Qty | CS2 Qty | CS3 Qty | CS4 Qty | |
|----------------|-----------------|-----------|---------|---------|---------|---------|-------------|
| 510 | Wearing Surface | 2,100 | 1,963 | 100 | 37 | 0 | Square Feet |

| Element Number | Defect Type | Defect Description | CS | CS Qty | Maint Qty | |
|---|-------------------------|---|----|--------|-----------|-------------|
| <input checked="" type="checkbox"/> 510 | Crack (Wearing Surface) | at bent 3, transverse cracks (up to 1/8 inch x full roadway width) with vegetation growth | 3 | 37 | 37 | Square Feet |

Structure Number: **110137**

Inspection Date: **08/29/2023**

| | | | | | | | |
|-------------------------------------|------------|--|---|---|-----|-----|-------------|
| <input checked="" type="checkbox"/> | 510 | Crack (Wearing Surface) | throughout asphalt wearing surface, transverse and longitudinal cracks (up to 1/32 inch x 5 foot) at random | 2 | 100 | 100 | Square Feet |
| <input checked="" type="checkbox"/> | 510 | Patched Area/Pothole (Wearing Surface) | PREVIOUSLY REPAIRED NUMEROUS SCATTERED AREAS WHERE THE ASPHALT IS BREAKING UP AND SUNKEN IN IN BOTH LEFT AND RIGHT LANES. | 1 | | | Square Feet |

General Comments

Span 4 Expansion Joint 3 Standard Joint

| Element Number | Element Name | Total Qty | CS1 Qty | CS2 Qty | CS3 Qty | CS4 Qty | |
|----------------|---------------------|-----------|---------|---------|---------|---------|------|
| 301 | Pourable Joint Seal | 38 | 38 | 0 | 0 | 0 | Feet |

| Element Number | Defect Type | Defect Description | CS | CS Qty | Maint Qty | |
|--------------------------|-------------|--------------------|--|--------|-----------|------|
| <input type="checkbox"/> | 301 | Debris Impaction | MOVED TO ASPHALT WEARING SURFACE 8-21-2019 | 1 | | Feet |
| <input type="checkbox"/> | 301 | Seal Adhesion | MOVED TO ASPHALT WEARING SURFACE 8-21-2019 | 1 | | Feet |

General Comments

COVERED BY ASPHALT WEARING SURFACE

Span 4 Deck Reinforced Concrete Deck

| Element Number | Element Name | Total Qty | CS1 Qty | CS2 Qty | CS3 Qty | CS4 Qty | |
|----------------|--------------------------|-----------|---------|---------|---------|---------|-------------|
| 12 | Reinforced Concrete Deck | 1,872 | 1,534 | 300 | 38 | 0 | Square Feet |

| Element Number | Defect Type | Defect Description | CS | CS Qty | Maint Qty | | |
|-------------------------------------|-------------|-----------------------------|--|--------|-----------|-----|-------------|
| <input checked="" type="checkbox"/> | 12 | Delamination/Spall | BOTTOM OF DECK EAST SIDE OF BEAM 5 OVER BENT 3 SPALL ALONG TOP FLANGE 7 INCH X 4 FOOT X 1 INCH DEEP. | 3 | 4 | 4 | Square Feet |
| <input checked="" type="checkbox"/> | 12 | Delamination/Spall | BOTTOM OF DECK WEST SIDE OF BEAM 1 OVER BENT 3 SPALL ALONG TOP FLANGE 7 INCH X 4 FOOT X 1 INCH DEEP. | 3 | 4 | 4 | Square Feet |
| <input checked="" type="checkbox"/> | 12 | Efflorescence/Rust Staining | (PAR) in bay 1 near end bent 2, transverse crack (hairline x full bay width) with efflorescence and rust stains; in bay 4 near midspan, transverse cracks (hairline x full bay width) with efflorescence buildup | 3 | 30 | 30 | Square Feet |
| <input checked="" type="checkbox"/> | 12 | Cracking (RC and Other) | BOTTOM OF DECK HAS MAP CRACKING UP TO 1/64 INCH WITH EFFLORESCENCE IN ALL BAYS. | 2 | 300 | 300 | Square Feet |

General Comments

Span 4 Beam 1 Plate Girder

| Element Number | Element Name | Total Qty | CS1 Qty | CS2 Qty | CS3 Qty | CS4 Qty | |
|----------------|--------------------------|-----------|---------|---------|---------|---------|-------------|
| 107 | Steel Open Girder/Beam | 51 | 50 | 0 | 0 | 1 | Feet |
| 515 | Steel Protective Coating | 507 | 506 | 0 | 0 | 1 | Square Feet |

| Element Number | Defect Type | Defect Description | CS | CS Qty | Maint Qty | |
|----------------|-------------|--------------------|----|--------|-----------|--|
|----------------|-------------|--------------------|----|--------|-----------|--|

Structure Number: **110137**

Inspection Date: **08/29/2023**

| | | | | | | | |
|-------------------------------------|------------|---|--|---|---|---|-------------|
| <input checked="" type="checkbox"/> | 107 | Corrosion | (PAR) at bent 3, corrosion with section loss: web adjacent to diaphragm (9/16 inch average remaining x 11 inch x 2 inch); right stiffener (0.15 inch average remaining x full width x 3 inch) with corrosion holes (up to 1/4 inch diameter); west face top flange, rust scale | 4 | 1 | 1 | Feet |
| <input checked="" type="checkbox"/> | 107 | Connection | 8 INCH X 1 FOOT X 1 INCH SPALL WITH EXPOSED REINFORCING WITH ADJACENT CRACKS UP TO 1/8 INCH BAY 1 IN BENT 3 DIAPHRAGM. | 3 | | | 1 Feet |
| <input checked="" type="checkbox"/> | 515 | Effectiveness (Steel Protective Coatings) | corrosion with section loss | 4 | 1 | 1 | Square Feet |
| <input checked="" type="checkbox"/> | 515 | Effectiveness (Steel Protective Coatings) | (combined with other notes 2023) failed | 1 | | | Square Feet |

General Comments

Span 4 Beam 2 Plate Girder

| Element Number | Element Name | Total Qty | CS1 Qty | CS2 Qty | CS3 Qty | CS4 Qty | |
|----------------|--------------------------|-----------|---------|---------|---------|---------|-------------|
| 107 | Steel Open Girder/Beam | 51 | 50 | 0 | 1 | 0 | Feet |
| 515 | Steel Protective Coating | 507 | 506 | 0 | 0 | 1 | Square Feet |

| Element Number | Defect Type | Defect Description | CS | CS Qty | Maint Qty | |
|-------------------------------------|-------------|---|----|--------|-----------|---|
| <input checked="" type="checkbox"/> | 107 | Corrosion | | | | at bent 3, corrosion with section loss: web adjacent to diaphragm (9/16 average remaining x 10 inch x 2 inch) |
| | | | 3 | 1 | 1 | Feet |
| <input checked="" type="checkbox"/> | 515 | Effectiveness (Steel Protective Coatings) | | | | corrosion with section loss |
| | | | 4 | 1 | 1 | Square Feet |

General Comments

Span 4 Beam 3 Plate Girder

| Element Number | Element Name | Total Qty | CS1 Qty | CS2 Qty | CS3 Qty | CS4 Qty | |
|----------------|--------------------------|-----------|---------|---------|---------|---------|-------------|
| 107 | Steel Open Girder/Beam | 51 | 50 | 1 | 0 | 0 | Feet |
| 515 | Steel Protective Coating | 507 | 506 | 0 | 0 | 1 | Square Feet |

| Element Number | Defect Type | Defect Description | CS | CS Qty | Maint Qty | |
|-------------------------------------|-------------|---|----|--------|-----------|--|
| <input checked="" type="checkbox"/> | 107 | Corrosion | | | | at bent 3, pitting with corrosion reactivating: web adjacent to diaphragm (1/16 inch deep x 10 inch x 2 inch); left stiffener (1/16 inch deep x full width x 2 inch) |
| | | | 2 | 1 | | Feet |
| <input checked="" type="checkbox"/> | 515 | Effectiveness (Steel Protective Coatings) | | | | corrosion with section loss |
| | | | 4 | 1 | 1 | Square Feet |

General Comments

Span 4**Beam 4****Plate Girder**

| Element Number | Element Name | Total Qty | CS1 Qty | CS2 Qty | CS3 Qty | CS4 Qty |
|----------------|--------------------------|-----------|---------|---------|---------|---------------|
| 107 | Steel Open Girder/Beam | 51 | 50 | 1 | 0 | 0 Feet |
| 515 | Steel Protective Coating | 507 | 506 | 0 | 0 | 1 Square Feet |

| Element Number | Defect Type | Defect Description | CS | CS Qty | Maint Qty |
|---|---|---|----|--------|---------------|
| <input checked="" type="checkbox"/> 107 | Connection | UP TO 1 FOOT X 6 INCH X 4 INCH SPALL WITH EXPOSED REINFORCING BAYS 3 AND 4 IN BENT 3 DIAPHRAGM. | 3 | | 1 Feet |
| <input checked="" type="checkbox"/> 107 | Corrosion | at bent 3, web adjacent to diaphragm and stiffener, rust scale (up to 10 inch) | 2 | 1 | Feet |
| <input checked="" type="checkbox"/> 515 | Effectiveness (Steel Protective Coatings) | rust scale | 4 | 1 | 1 Square Feet |

General Comments**Span 4****Beam 5****Plate Girder**

| Element Number | Element Name | Total Qty | CS1 Qty | CS2 Qty | CS3 Qty | CS4 Qty |
|----------------|--------------------------|-----------|---------|---------|---------|---------------|
| 107 | Steel Open Girder/Beam | 51 | 50 | 0 | 1 | 0 Feet |
| 515 | Steel Protective Coating | 507 | 506 | 0 | 0 | 1 Square Feet |

| Element Number | Defect Type | Defect Description | CS | CS Qty | Maint Qty |
|---|---|---|----|--------|---------------|
| <input checked="" type="checkbox"/> 107 | Corrosion | at bent 3, pitting with corrosion reactivating: web adjacent to diaphragm (up to 1/16 inch deep x 10 inch x 2.5 inch); bottom flange (1/8 inch deep x 1 foot) | 3 | 1 | 1 Feet |
| <input checked="" type="checkbox"/> 515 | Effectiveness (Steel Protective Coatings) | corrosion with section loss | 4 | 1 | 1 Square Feet |

General Comments**Span 4****Left Bridge Rail****Concrete Railing**

| Element Number | Element Name | Total Qty | CS1 Qty | CS2 Qty | CS3 Qty | CS4 Qty |
|----------------|------------------------------------|-----------|---------|---------|---------|---------|
| 331 | Reinforced Concrete Bridge Railing | 52 | 37 | 8 | 7 | 0 Feet |

| Element Number | Defect Type | Defect Description | CS | CS Qty | Maint Qty |
|---|-------------------------|--|----|--------|-------------|
| <input checked="" type="checkbox"/> 331 | Delamination/Spall | along length of rail, multiple spalls, up to 20 inch x 3 inch x 1 inch deep, some with exposed rusted reinforcing, no loss noted | 3 | 7 | 7 Feet |
| <input checked="" type="checkbox"/> 331 | Cracking (RC and Other) | along the length of sidewalk, transverse cracks (hairline x full width) and map cracks (hairline) at random | 2 | | Feet |
| <input checked="" type="checkbox"/> 331 | Patched Area | PATCHED AREA 9 FOOT FROM END BENT 2 OVER A 6 FOOT LONG AREA. | 2 | 6 | Square Feet |
| <input checked="" type="checkbox"/> 331 | Patched Area | previously repaired crack on post at 24 foot from bent 3 | 2 | 2 | Square Feet |

General Comments

Span 4 Right Bridge Rail**Concrete Railing**

| Element Number | Element Name | Total Qty | CS1 Qty | CS2 Qty | CS3 Qty | CS4 Qty |
|----------------|------------------------------------|-----------|---------|---------|---------|---------|
| 331 | Reinforced Concrete Bridge Railing | 52 | 43 | 0 | 9 | 0 Feet |

| Element Number | Defect Type | Defect Description | CS | CS Qty | Maint Qty |
|---|-------------------------|--|----|--------|-----------|
| <input checked="" type="checkbox"/> 331 | Delamination/Spall | along length of rail, multiple spalls, up to 20 inch x 3 inch x 1 inch deep, some with exposed rusted reinforcing, no loss noted | 3 | 9 | 9 Feet |
| <input checked="" type="checkbox"/> 331 | Cracking (RC and Other) | along the length of sidewalk, transverse cracks (hairline x full width) and map cracks (hairline) at random | 2 | | Feet |

General Comments**Span 4 Near Bearing 1****Movable Bearing**

| Element Number | Element Name | Total Qty | CS1 Qty | CS2 Qty | CS3 Qty | CS4 Qty |
|----------------|--------------------------|-----------|---------|---------|---------|---------------|
| 311 | Movable Bearing | 1 | 0 | 0 | 1 | 0 Each |
| 515 | Steel Protective Coating | 1 | 0 | 0 | 0 | 1 Square Feet |

| Element Number | Defect Type | Defect Description | CS | CS Qty | Maint Qty |
|---|---|---|----|--------|---------------|
| <input checked="" type="checkbox"/> 311 | Corrosion | at both anchor bolt, arrested metal loss - 3/4 inch average remaining | 3 | 1 | 1 Each |
| <input checked="" type="checkbox"/> 311 | Corrosion | surface rust | 2 | | Each |
| <input checked="" type="checkbox"/> 515 | Effectiveness (Steel Protective Coatings) | surface rust/corrosion with section loss | 4 | 1 | 1 Square Feet |

General Comments**Span 4 Far Bearing 1****Fixed Bearing**

| Element Number | Element Name | Total Qty | CS1 Qty | CS2 Qty | CS3 Qty | CS4 Qty |
|----------------|--------------------------|-----------|---------|---------|---------|---------------|
| 313 | Fixed Bearing | 1 | 0 | 1 | 0 | 0 Each |
| 515 | Steel Protective Coating | 1 | 0 | 0 | 0 | 1 Square Feet |

| Element Number | Defect Type | Defect Description | CS | CS Qty | Maint Qty |
|---|---|-------------------------|----|--------|---------------|
| <input checked="" type="checkbox"/> 313 | Corrosion | surface rust/rust scale | 2 | 1 | Each |
| <input checked="" type="checkbox"/> 515 | Effectiveness (Steel Protective Coatings) | surface rust/rust scale | 4 | 1 | 1 Square Feet |

General Comments

Span 4 Near Bearing 2
Movable Bearing

| Element Number | Element Name | Total Qty | CS1 Qty | CS2 Qty | CS3 Qty | CS4 Qty | |
|----------------|--------------------------|-----------|---------|---------|---------|---------|-------------|
| 311 | Movable Bearing | 1 | 0 | 1 | 0 | 0 | Each |
| 515 | Steel Protective Coating | 1 | 0 | 0 | 1 | 0 | Square Feet |

| Element Number | Defect Type | Defect Description | CS | CS Qty | Maint Qty | |
|---|---|--------------------|----|--------|-----------|-------------|
| <input checked="" type="checkbox"/> 311 | Corrosion | surface rust | 2 | 1 | | Each |
| <input checked="" type="checkbox"/> 515 | Effectiveness (Steel Protective Coatings) | surface rust | 3 | 1 | 1 | Square Feet |

General Comments

Span 4 Far Bearing 2
Fixed Bearing

| Element Number | Element Name | Total Qty | CS1 Qty | CS2 Qty | CS3 Qty | CS4 Qty | |
|----------------|--------------------------|-----------|---------|---------|---------|---------|-------------|
| 313 | Fixed Bearing | 1 | 0 | 1 | 0 | 0 | Each |
| 515 | Steel Protective Coating | 1 | 0 | 1 | 0 | 0 | Square Feet |

| Element Number | Defect Type | Defect Description | CS | CS Qty | Maint Qty | |
|---|---|--------------------|----|--------|-----------|-------------|
| <input checked="" type="checkbox"/> 313 | Corrosion | freckled rust | 2 | 1 | | Each |
| <input checked="" type="checkbox"/> 515 | Effectiveness (Steel Protective Coatings) | freckled rust | 2 | 1 | 1 | Square Feet |

General Comments

Span 4 Near Bearing 3
Movable Bearing

| Element Number | Element Name | Total Qty | CS1 Qty | CS2 Qty | CS3 Qty | CS4 Qty | |
|----------------|--------------------------|-----------|---------|---------|---------|---------|-------------|
| 311 | Movable Bearing | 1 | 0 | 1 | 0 | 0 | Each |
| 515 | Steel Protective Coating | 1 | 0 | 0 | 0 | 1 | Square Feet |

| Element Number | Defect Type | Defect Description | CS | CS Qty | Maint Qty | |
|---|---|--------------------|----|--------|-----------|-------------|
| <input checked="" type="checkbox"/> 311 | Corrosion | rust scale | 2 | 1 | | Each |
| <input checked="" type="checkbox"/> 515 | Effectiveness (Steel Protective Coatings) | rust scale | 4 | 1 | 1 | Square Feet |

General Comments

Span 4 Far Bearing 3
Fixed Bearing

| Element Number | Element Name | Total Qty | CS1 Qty | CS2 Qty | CS3 Qty | CS4 Qty | |
|----------------|--------------------------|-----------|---------|---------|---------|---------|-------------|
| 313 | Fixed Bearing | 1 | 0 | 1 | 0 | 0 | Each |
| 515 | Steel Protective Coating | 1 | 0 | 1 | 0 | 0 | Square Feet |

| Element Number | Defect Type | Defect Description | CS | CS Qty | Maint Qty | |
|---|-------------|--------------------|----|--------|-----------|------|
| <input checked="" type="checkbox"/> 313 | Corrosion | freckled rust | 2 | 1 | | Each |

| | | | | | | | |
|-------------------------------------|------------|---|---------------|---|---|---|-------------|
| <input checked="" type="checkbox"/> | 515 | Effectiveness (Steel Protective Coatings) | freckled rust | 2 | 1 | 1 | Square Feet |
|-------------------------------------|------------|---|---------------|---|---|---|-------------|

General Comments**Span 4 Near Bearing 4****Movable Bearing**

| Element Number | Element Name | Total Qty | CS1 Qty | CS2 Qty | CS3 Qty | CS4 Qty | |
|----------------|--------------------------|-----------|---------|---------|---------|---------|-------------|
| 311 | Movable Bearing | 1 | 0 | 1 | 0 | 0 | Each |
| 515 | Steel Protective Coating | 1 | 0 | 0 | 1 | 0 | Square Feet |

| Element Number | Defect Type | Defect Description | CS | CS Qty | Maint Qty | |
|-------------------------------------|-------------|---|--------------|--------|-----------|---------------|
| <input checked="" type="checkbox"/> | 311 | Corrosion | surface rust | 2 | 1 | Each |
| <input checked="" type="checkbox"/> | 515 | Effectiveness (Steel Protective Coatings) | surface rust | 3 | 1 | 1 Square Feet |

General Comments**Span 4 Far Bearing 4****Fixed Bearing**

| Element Number | Element Name | Total Qty | CS1 Qty | CS2 Qty | CS3 Qty | CS4 Qty | |
|----------------|--------------------------|-----------|---------|---------|---------|---------|-------------|
| 313 | Fixed Bearing | 1 | 0 | 1 | 0 | 0 | Each |
| 515 | Steel Protective Coating | 1 | 0 | 1 | 0 | 0 | Square Feet |

| Element Number | Defect Type | Defect Description | CS | CS Qty | Maint Qty | |
|-------------------------------------|-------------|---|---------------|--------|-----------|---------------|
| <input checked="" type="checkbox"/> | 313 | Corrosion | freckled rust | 2 | 1 | Each |
| <input checked="" type="checkbox"/> | 515 | Effectiveness (Steel Protective Coatings) | freckled rust | 2 | 1 | 1 Square Feet |

General Comments**Span 4 Near Bearing 5****Movable Bearing**

| Element Number | Element Name | Total Qty | CS1 Qty | CS2 Qty | CS3 Qty | CS4 Qty | |
|----------------|--------------------------|-----------|---------|---------|---------|---------|-------------|
| 311 | Movable Bearing | 1 | 0 | 1 | 0 | 0 | Each |
| 515 | Steel Protective Coating | 1 | 0 | 0 | 1 | 0 | Square Feet |

| Element Number | Defect Type | Defect Description | CS | CS Qty | Maint Qty | |
|-------------------------------------|-------------|---|---|--------|-----------|---------------|
| <input checked="" type="checkbox"/> | 311 | Connection | (PAR) right anchor rod, sheared/missing | 4 | 1 | 1 Each |
| <input checked="" type="checkbox"/> | 311 | Corrosion | surface rust | 2 | | Each |
| <input checked="" type="checkbox"/> | 515 | Effectiveness (Steel Protective Coatings) | surface rust | 3 | 1 | 1 Square Feet |

General Comments

Span 4**Far Bearing 5****Fixed Bearing**

| Element Number | Element Name | Total Qty | CS1 Qty | CS2 Qty | CS3 Qty | CS4 Qty | |
|----------------|--------------------------|-----------|---------|---------|---------|---------|-------------|
| 313 | Fixed Bearing | 1 | 0 | 0 | 1 | 0 | Each |
| 515 | Steel Protective Coating | 1 | 0 | 0 | 1 | 0 | Square Feet |

| Element Number | Defect Type | Defect Description | CS | CS Qty | Maint Qty | |
|---|---|--------------------|----|--------|-----------|-------------|
| <input checked="" type="checkbox"/> 313 | Corrosion | surface rust | 2 | 1 | | Each |
| <input checked="" type="checkbox"/> 515 | Effectiveness (Steel Protective Coatings) | surface rust | 3 | 1 | 1 | Square Feet |

General Comments

Span 4**Wearing Surface****Asphalt Wearing Surface**

| Element Number | Element Name | Total Qty | CS1 Qty | CS2 Qty | CS3 Qty | CS4 Qty | |
|----------------|-----------------|-----------|---------|---------|---------|---------|-------------|
| 510 | Wearing Surface | 1,456 | 1,407 | 49 | 0 | 0 | Square Feet |

| Element Number | Defect Type | Defect Description | CS | CS Qty | Maint Qty | |
|---|--|---|----|--------|-----------|-------------|
| <input checked="" type="checkbox"/> 510 | Crack (Wearing Surface) | at end bent 2, transverse cracks (up to 1/32 inch x 15 foot) | 2 | 19 | 19 | Square Feet |
| <input checked="" type="checkbox"/> 510 | Crack (Wearing Surface) | throughout asphalt wearing surface, transverse and longitudinal cracks (up to 1/32 inch x 5 foot) at random | 2 | 30 | 30 | Square Feet |
| <input checked="" type="checkbox"/> 510 | Crack (Wearing Surface) | PREVIOUSLY REPAIRED SEALED MAP & TRANSVERSE CRACKS AT RANDOM THROUGHOUT. | 1 | | | Square Feet |
| <input checked="" type="checkbox"/> 510 | Patched Area/Pothole (Wearing Surface) | PREVIOUSLY REPAIRED SPAN 4 TOP OF ASPHALT WEARING SURFACE HAS NUMEROUS SCATTERED AREAS WHERE THE ASPHALT IS BREAKING UP AND SUNKEN IN IN BOTH LEFT AND RIGHT LANES. | 1 | | | Square Feet |

General Comments

End Bent 1**Abutment****Reinforced Concrete Abutment**

| Element Number | Element Name | Total Qty | CS1 Qty | CS2 Qty | CS3 Qty | CS4 Qty | |
|----------------|------------------------------|-----------|---------|---------|---------|---------|------|
| 215 | Reinforced Concrete Abutment | 53 | 48 | 0 | 5 | 0 | Feet |

| Element Number | Defect Type | Defect Description | CS | CS Qty | Maint Qty | |
|---|--------------------|--|----|--------|-----------|------|
| <input checked="" type="checkbox"/> 215 | Delamination/Spall | along the length of the abutment, at bottom flange penetrations, spalls/delaminations (12 inch x 5 inch x 1 inch deep) | 3 | 5 | 5 | Feet |

General Comments

End Bent 1**Cap 1****Reinforced Concrete Pier Cap**

| Element Number | Element Name | Total Qty | CS1 Qty | CS2 Qty | CS3 Qty | CS4 Qty |
|----------------|------------------------------|-----------|---------|---------|---------|---------|
| 234 | Reinforced Concrete Pier Cap | 55 | 43 | 7 | 5 | 0 Feet |

| Element Number | Defect Type | Defect Description | CS | CS Qty | Maint Qty |
|---|-------------------------|---|----|--------|-----------|
| <input checked="" type="checkbox"/> 234 | Delamination/Spall | 1 FOOT X 3 INCH X 1/2 INCH SPALL UNDER BEAM 2 WITH ADJACENT HORIZONTAL CRACK UP TO 1/16 INCH X 4 FOOT | 3 | 4 | 4 Feet |
| <input checked="" type="checkbox"/> 234 | Delamination/Spall | below beam 1, spall (1 foot x 3 inch x 1/2 inch deep) | 3 | 1 | 1 Feet |
| <input checked="" type="checkbox"/> 234 | Cracking (RC and Other) | along length, multiple vertical cracks [up to full height x 1/32 inch] | 2 | 7 | Feet |

General Comments**Bent 1****Cap 1****Reinforced Concrete Pier Cap**

| Element Number | Element Name | Total Qty | CS1 Qty | CS2 Qty | CS3 Qty | CS4 Qty |
|----------------|------------------------------|-----------|---------|---------|---------|---------|
| 234 | Reinforced Concrete Pier Cap | 45 | 2 | 0 | 43 | 0 Feet |

| Element Number | Defect Type | Defect Description | CS | CS Qty | Maint Qty |
|---|-------------------------|---|----|--------|-----------|
| <input checked="" type="checkbox"/> 234 | Cracking (RC and Other) | underside of cap, between columns 1 and 3, spalls/delaminations (up to 12 foot x full width x 1 inch deep) with cracks (up to 1/8 inch) | 3 | 12 | 19 Feet |
| <input checked="" type="checkbox"/> 234 | Cracking (RC and Other) | UP TO 14 FOOT X 1/8 INCH HORIZONTAL CRACKS AT RANDOM THROUGHOUT ON SOUTH FACE AND UNDERSIDE | 3 | 25 | 30 Feet |
| <input checked="" type="checkbox"/> 234 | Exposed Rebar | [PAR] 10 INCH X 48 INCH X 2 INCH DEEP SPALL/DELAMINATION WITH EXPOSED RUSTED REBAR NEAR TOP OF CAP, NORTH FACE BELOW BEAM 2 | 3 | 4 | 4 Feet |
| <input checked="" type="checkbox"/> 234 | Exposed Rebar | [PAR] 32 INCH X 15 INCH X 3 INCH SPALL WITH EXPOSED PRIMARY REINFORCING [SECTION LOSS UP TO 1/8 INCH] WITH ADJACENT DELAMINATION ON TOP NORTH FACE UNDER BAY 1. | 3 | 1 | 1 Feet |
| <input checked="" type="checkbox"/> 234 | Exposed Rebar | [PAR] 4 INCH X 7 INCH X 1 INCH NORTH FACE OF CAP HAS A SPALL AREA UNDER BEAM 3 WITH PRIMARY REBAR EXPOSED [SECTION LOSS UP TO 1/8 INCH] | 3 | 1 | 1 Feet |
| <input checked="" type="checkbox"/> 234 | Delamination/Spall | 2 FOOT X 6 FOOT CRACKED DELAMINATED AREA IN BAY 3 ON NORTH FACE. | 2 | | 7 Feet |
| <input type="checkbox"/> 234 | Cracking (RC and Other) | DUPLICATE DEFECT 8-22-2019. | 1 | | Feet |
| <input type="checkbox"/> 234 | Delamination/Spall | DUPLICATE DEFECT 8-22-2019. | 1 | | Feet |
| <input type="checkbox"/> 234 | Delamination/Spall | MOVED TO OTHER DEFECT 8-22-2019. | 1 | | Feet |

General Comments

Bent 1**Pile 1****Reinforced Concrete Column**

| Element Number | Element Name | Total Qty | CS1 Qty | CS2 Qty | CS3 Qty | CS4 Qty |
|----------------|----------------------------|-----------|---------|---------|---------|---------|
| 205 | Reinforced Concrete Column | 1 | 0 | 1 | 0 | 0 Each |

| Element Number | Defect Type | Defect Description | CS | CS Qty | Maint Qty |
|---|-------------------------|--|----|--------|-----------|
| <input checked="" type="checkbox"/> 205 | Cracking (RC and Other) | 6 FOOT X UP TO 1/32 INCH VERTICAL CRACK ON WEST FACE 6 FOOT FROM BOTTOM OF CAP, SIMILAR VERTICAL CRACK ON EAST FACE BELOW CORBEL | 2 | 1 | Each |

General Comments**Bent 1****Pile 3****Reinforced Concrete Column**

| Element Number | Element Name | Total Qty | CS1 Qty | CS2 Qty | CS3 Qty | CS4 Qty |
|----------------|----------------------------|-----------|---------|---------|---------|---------|
| 205 | Reinforced Concrete Column | 1 | 0 | 1 | 0 | 0 Each |

| Element Number | Defect Type | Defect Description | CS | CS Qty | Maint Qty |
|---|-------------------------|---|----|--------|-----------|
| <input checked="" type="checkbox"/> 205 | Cracking (RC and Other) | east and west faces below corbel, vertical crack [3 foot x 1/32 inch] | 2 | 1 | Each |

General Comments**End Bent 2****Abutment****Reinforced Concrete Abutment**

| Element Number | Element Name | Total Qty | CS1 Qty | CS2 Qty | CS3 Qty | CS4 Qty |
|----------------|------------------------------|-----------|---------|---------|---------|---------|
| 215 | Reinforced Concrete Abutment | 53 | 48 | 0 | 5 | 0 Feet |

| Element Number | Defect Type | Defect Description | CS | CS Qty | Maint Qty |
|---|--------------------|---|----|--------|-----------|
| <input checked="" type="checkbox"/> 215 | Delamination/Spall | along the length of the abutment, at bottom flange penetrations, spalls/delaminations (8 inch x 4 inch x 1.5 inch deep) | 3 | 5 | 5 Feet |

General Comments**End Bent 2****Cap 1****Reinforced Concrete Pier Cap**

| Element Number | Element Name | Total Qty | CS1 Qty | CS2 Qty | CS3 Qty | CS4 Qty |
|----------------|------------------------------|-----------|---------|---------|---------|---------|
| 234 | Reinforced Concrete Pier Cap | 55 | 17 | 20 | 18 | 0 Feet |

| Element Number | Defect Type | Defect Description | CS | CS Qty | Maint Qty |
|---|-------------------------|--|----|--------|-----------|
| <input checked="" type="checkbox"/> 234 | Cracking (RC and Other) | 5 FOOT X UP TO 1/8 INCH HORIZONTAL CRACK UNDER BEAM 1 | 3 | 5 | 5 Feet |
| <input checked="" type="checkbox"/> 234 | Cracking (RC and Other) | IN BAY 4, 13 FOOT UP TO 1/8 INCH HORIZONTAL CRACK WITH DELAMINATED AREA 13 FOOT X 9 INCH X 7 INCH ON TOP AND SOUTH FACE. | 3 | 13 | 13 Feet |
| <input checked="" type="checkbox"/> 234 | Cracking (RC and Other) | along length of cap, multiple vertical cracks, up to full height x 1/32 inch | 2 | 20 | Feet |

General Comments

Bent 2 Cap 1
Reinforced Concrete Pier Cap

| Element Number | Element Name | Total Qty | CS1 Qty | CS2 Qty | CS3 Qty | CS4 Qty |
|----------------|------------------------------|-----------|---------|---------|---------|---------|
| 234 | Reinforced Concrete Pier Cap | 45 | 12 | 0 | 30 | 3 Feet |

| Element Number | Defect Type | Defect Description | CS | CS Qty | Maint Qty |
|---|-----------------------------|---|----|--------|-----------|
| <input checked="" type="checkbox"/> 234 | Exposed Rebar | (PAR) 3 FOOT X UP TO 7 INCH X 8 INCH X 3 INCH DEEP SPALL WITH EXPOSED REINFORCING WITH APPROXIMATELY 25 PERCENT LOSS AND ADJACENT DELAMINATION UNDER BAY 2 NORTH AND BOTTOM FACES. | 4 | 3 | 3 Feet |
| <input checked="" type="checkbox"/> 234 | Cracking (RC and Other) | BENT 2 SOUTH AND NORTH FACES OF CAP HAS SCATTERED HORIZONTAL CRACKS UP TO 1/16 INCH X 8 FOOT IN TOP AND BOTTOM EDGE FROM BEAM 1 TO BEAM 2 AND BEAM 4 TO BEAM 5. | 3 | 12 | 12 Feet |
| <input checked="" type="checkbox"/> 234 | Efflorescence/Rust Staining | (PAR) 3 FOOT X UP TO 1/8 INCH LONGITUDINAL CRACK WITH RUST STAINING WITH ADJACENT DELAMINATIONS UP TO 5 FOOT X FULL WIDTH SOUTH AND BOTTOM FACES UNDER BAY 3 | 3 | 10 | 10 Feet |
| <input checked="" type="checkbox"/> 234 | Efflorescence/Rust Staining | (PAR) BENT 2 NORTH FACE OF CAP HAS A HORIZONTAL CRACK [UP TO 1/8 INCH] WITH RUST STAIN WITH ADJACENT DELAMINATED AREA ALONG TOP EDGE OF CAP BETWEEN BEAM 4 AND BEAM 5 5 INCH TO 20 INCH DOWN FACE 88 INCH LONG AND 4 INCH ON TOP. | 3 | 8 | 8 Feet |

General Comments

Bent 2 Pile 3
Reinforced Concrete Column

| Element Number | Element Name | Total Qty | CS1 Qty | CS2 Qty | CS3 Qty | CS4 Qty |
|----------------|----------------------------|-----------|---------|---------|---------|---------|
| 205 | Reinforced Concrete Column | 1 | 0 | 0 | 1 | 0 Each |

| Element Number | Defect Type | Defect Description | CS | CS Qty | Maint Qty |
|---|--------------------|--|----|--------|-----------|
| <input checked="" type="checkbox"/> 205 | Delamination/Spall | BENT 2 SOUTHEAST CORNER OF COLUMN 3 HAS SPALL AREA 38 INCH ABOVE THE GROUND LINE AND 5 INCH X 5 INCH X 12 INCH X 1 INCH DEEP | 3 | 1 | 1 Each |

General Comments

Bent 3 Cap 1
Reinforced Concrete Pier Cap

| Element Number | Element Name | Total Qty | CS1 Qty | CS2 Qty | CS3 Qty | CS4 Qty |
|----------------|------------------------------|-----------|---------|---------|---------|---------|
| 234 | Reinforced Concrete Pier Cap | 45 | 19 | 0 | 26 | 0 Feet |

| Element Number | Defect Type | Defect Description | CS | CS Qty | Maint Qty |
|---|-----------------------------|---|----|--------|-----------|
| <input checked="" type="checkbox"/> 234 | Cracking (RC and Other) | SOUTH AND NORTH FACE (2) UP TO 8 FOOT X 1/16 INCH HORIZONTAL CRACK UNDER BAY 1, SIMILAR BAY 4. | 3 | 16 | 16 Feet |
| <input checked="" type="checkbox"/> 234 | Efflorescence/Rust Staining | (PAR) UNDERSIDE OF CAP, 10 FOOT UP TO 1/16 INCH LONGITUDINAL CRACK WITH RUST STAINING UNDER BEAM 2, SIMILAR UNDER BEAM 4. | 3 | 10 | 10 Feet |

General Comments

Bent 3 Pile 1
Reinforced Concrete Column

| Element Number | Element Name | Total Qty | CS1 Qty | CS2 Qty | CS3 Qty | CS4 Qty | |
|----------------|----------------------------|-----------|---------|---------|---------|---------|------|
| 205 | Reinforced Concrete Column | 1 | 0 | 0 | 1 | 0 | Each |

| Element Number | Defect Type | Defect Description | CS | CS Qty | Maint Qty | |
|---|-------------------------|---|----|--------|-----------|------|
| <input checked="" type="checkbox"/> 205 | Delamination/Spall | East face 3 foot from ground, spall/delamination [12 inch x 3 inch x 1/2 inch deep] | 3 | 1 | 1 | Each |
| <input checked="" type="checkbox"/> 205 | Cracking (RC and Other) | (4) 6 FOOT X UP TO 1/32 INCH VERTICAL CRACKS BEGINNING AT BOTTOM OF CAP AT RANDOM THROUGHOUT. | 2 | | | Each |

General Comments

Bent 3 Pile 2
Reinforced Concrete Column

| Element Number | Element Name | Total Qty | CS1 Qty | CS2 Qty | CS3 Qty | CS4 Qty | |
|----------------|----------------------------|-----------|---------|---------|---------|---------|------|
| 205 | Reinforced Concrete Column | 1 | 0 | 1 | 0 | 0 | Each |

| Element Number | Defect Type | Defect Description | CS | CS Qty | Maint Qty | |
|---|-------------------------|--|----|--------|-----------|------|
| <input checked="" type="checkbox"/> 205 | Cracking (RC and Other) | 36 INCH X 24 INCH CRACKED DELAMINATION AREA WITH CRACKS UP TO 1/32 INCH ON WEST FACE NEAR GROUND LINE. | 2 | 1 | | Each |
| <input checked="" type="checkbox"/> 205 | Cracking (RC and Other) | 4 FOOT X UP TO 1/32 INCH VERTICAL CRACK ON NORTHWEST CORNER AT GROUNDLINE | 2 | | | Each |

General Comments

Elements Verified

| Location | Name | Component | Element Name | Amount |
|----------|-------------------|--------------------------|------------------------------------|--------|
| Span 1 | Deck | Reinforced Concrete Deck | Reinforced Concrete Deck | 2700 |
| Span 1 | Beam 1 | Plate Girder | Steel Open Girder/Beam | 74 |
| Span 1 | Beam 2 | Plate Girder | Steel Open Girder/Beam | 74 |
| Span 1 | Beam 3 | Plate Girder | Steel Open Girder/Beam | 74 |
| Span 1 | Beam 4 | Plate Girder | Steel Open Girder/Beam | 74 |
| Span 1 | Beam 5 | Plate Girder | Steel Open Girder/Beam | 74 |
| Span 1 | Left Bridge Rail | Concrete Railing | Reinforced Concrete Bridge Railing | 75 |
| Span 1 | Right Bridge Rail | Concrete Railing | Reinforced Concrete Bridge Railing | 75 |
| Span 1 | Wearing Surface | Asphalt Wearing Surface | Wearing Surface | 2100 |
| Span 1 | Near Bearing 1 | Fixed Bearing | Fixed Bearing | 1 |
| Span 1 | Far Bearing 1 | Movable Bearing | Movable Bearing | 1 |
| Span 1 | Far Bearing 2 | Movable Bearing | Movable Bearing | 1 |
| Span 1 | Near Bearing 2 | Fixed Bearing | Fixed Bearing | 1 |
| Span 1 | Near Bearing 3 | Fixed Bearing | Fixed Bearing | 1 |
| Span 1 | Far Bearing 3 | Movable Bearing | Movable Bearing | 1 |
| Span 1 | Far Bearing 4 | Movable Bearing | Movable Bearing | 1 |
| Span 1 | Near Bearing 4 | Fixed Bearing | Fixed Bearing | 1 |
| Span 1 | Near Bearing 5 | Fixed Bearing | Fixed Bearing | 1 |
| Span 1 | Far Bearing 5 | Movable Bearing | Movable Bearing | 1 |
| Span 2 | Deck | Reinforced Concrete Deck | Reinforced Concrete Deck | 2700 |
| Span 2 | Beam 1 | Plate Girder | Steel Open Girder/Beam | 75 |
| Span 2 | Beam 2 | Plate Girder | Steel Open Girder/Beam | 75 |
| Span 2 | Beam 3 | Plate Girder | Steel Open Girder/Beam | 75 |
| Span 2 | Beam 4 | Plate Girder | Steel Open Girder/Beam | 75 |
| Span 2 | Beam 5 | Plate Girder | Steel Open Girder/Beam | 75 |
| Span 2 | Left Bridge Rail | Concrete Railing | Reinforced Concrete Bridge Railing | 75 |
| Span 2 | Right Bridge Rail | Concrete Railing | Reinforced Concrete Bridge Railing | 75 |
| Span 2 | Wearing Surface | Asphalt Wearing Surface | Wearing Surface | 2100 |
| Span 2 | Near Bearing 1 | Fixed Bearing | Fixed Bearing | 1 |
| Span 2 | Far Bearing 1 | Movable Bearing | Movable Bearing | 1 |
| Span 2 | Far Bearing 2 | Movable Bearing | Movable Bearing | 1 |
| Span 2 | Near Bearing 2 | Fixed Bearing | Fixed Bearing | 1 |
| Span 2 | Near Bearing 3 | Fixed Bearing | Fixed Bearing | 1 |
| Span 2 | Far Bearing 3 | Movable Bearing | Movable Bearing | 1 |
| Span 2 | Far Bearing 4 | Movable Bearing | Movable Bearing | 1 |
| Span 2 | Near Bearing 4 | Fixed Bearing | Fixed Bearing | 1 |
| Span 2 | Near Bearing 5 | Fixed Bearing | Fixed Bearing | 1 |
| Span 2 | Far Bearing 5 | Movable Bearing | Movable Bearing | 1 |
| Span 3 | Deck | Reinforced Concrete Deck | Reinforced Concrete Deck | 2700 |
| Span 3 | Beam 1 | Plate Girder | Steel Open Girder/Beam | 75 |
| Span 3 | Beam 2 | Plate Girder | Steel Open Girder/Beam | 75 |
| Span 3 | Beam 3 | Plate Girder | Steel Open Girder/Beam | 75 |
| Span 3 | Beam 4 | Plate Girder | Steel Open Girder/Beam | 75 |
| Span 3 | Beam 5 | Plate Girder | Steel Open Girder/Beam | 75 |
| Span 3 | Left Bridge Rail | Concrete Railing | Reinforced Concrete Bridge Railing | 75 |

Elements Verified

| Location | Name | Component | Element Name | Amount |
|------------|-------------------|------------------------------|------------------------------------|--------|
| Span 3 | Right Bridge Rail | Concrete Railing | Reinforced Concrete Bridge Railing | 75 |
| Span 3 | Wearing Surface | Asphalt Wearing Surface | Wearing Surface | 2100 |
| Span 3 | Near Bearing 1 | Fixed Bearing | Fixed Bearing | 1 |
| Span 3 | Far Bearing 1 | Movable Bearing | Movable Bearing | 1 |
| Span 3 | Far Bearing 2 | Movable Bearing | Movable Bearing | 1 |
| Span 3 | Near Bearing 2 | Fixed Bearing | Fixed Bearing | 1 |
| Span 3 | Near Bearing 3 | Fixed Bearing | Fixed Bearing | 1 |
| Span 3 | Far Bearing 3 | Movable Bearing | Movable Bearing | 1 |
| Span 3 | Far Bearing 4 | Movable Bearing | Movable Bearing | 1 |
| Span 3 | Near Bearing 4 | Fixed Bearing | Fixed Bearing | 1 |
| Span 3 | Near Bearing 5 | Fixed Bearing | Fixed Bearing | 1 |
| Span 3 | Far Bearing 5 | Movable Bearing | Movable Bearing | 1 |
| Span 4 | Deck | Reinforced Concrete Deck | Reinforced Concrete Deck | 1872 |
| Span 4 | Beam 1 | Plate Girder | Steel Open Girder/Beam | 51 |
| Span 4 | Beam 2 | Plate Girder | Steel Open Girder/Beam | 51 |
| Span 4 | Beam 3 | Plate Girder | Steel Open Girder/Beam | 51 |
| Span 4 | Beam 4 | Plate Girder | Steel Open Girder/Beam | 51 |
| Span 4 | Beam 5 | Plate Girder | Steel Open Girder/Beam | 51 |
| Span 4 | Left Bridge Rail | Concrete Railing | Reinforced Concrete Bridge Railing | 52 |
| Span 4 | Right Bridge Rail | Concrete Railing | Reinforced Concrete Bridge Railing | 52 |
| Span 4 | Wearing Surface | Asphalt Wearing Surface | Wearing Surface | 1456 |
| Span 4 | Near Bearing 1 | Movable Bearing | Movable Bearing | 1 |
| Span 4 | Far Bearing 1 | Fixed Bearing | Fixed Bearing | 1 |
| Span 4 | Far Bearing 2 | Fixed Bearing | Fixed Bearing | 1 |
| Span 4 | Near Bearing 2 | Movable Bearing | Movable Bearing | 1 |
| Span 4 | Near Bearing 3 | Movable Bearing | Movable Bearing | 1 |
| Span 4 | Far Bearing 3 | Fixed Bearing | Fixed Bearing | 1 |
| Span 4 | Far Bearing 4 | Fixed Bearing | Fixed Bearing | 1 |
| Span 4 | Near Bearing 4 | Movable Bearing | Movable Bearing | 1 |
| Span 4 | Near Bearing 5 | Movable Bearing | Movable Bearing | 1 |
| Span 4 | Far Bearing 5 | Fixed Bearing | Fixed Bearing | 1 |
| Bent 1 | Cap 1 | Reinforced Concrete Pier Cap | Reinforced Concrete Pier Cap | 45 |
| Bent 1 | Pile 1 | Reinforced Concrete Column | Reinforced Concrete Column | 1 |
| Bent 1 | Pile 2 | Reinforced Concrete Column | Reinforced Concrete Column | 1 |
| Bent 1 | Pile 3 | Reinforced Concrete Column | Reinforced Concrete Column | 1 |
| End Bent 1 | Cap 1 | Reinforced Concrete Pier Cap | Reinforced Concrete Pier Cap | 55 |
| End Bent 1 | Abutment | Reinforced Concrete Abutment | Reinforced Concrete Abutment | 53 |
| Bent 2 | Cap 1 | Reinforced Concrete Pier Cap | Reinforced Concrete Pier Cap | 45 |
| Bent 2 | Pile 1 | Reinforced Concrete Column | Reinforced Concrete Column | 1 |
| Bent 2 | Pile 2 | Reinforced Concrete Column | Reinforced Concrete Column | 1 |
| Bent 2 | Pile 3 | Reinforced Concrete Column | Reinforced Concrete Column | 1 |
| End Bent 2 | Cap 1 | Reinforced Concrete Pier Cap | Reinforced Concrete Pier Cap | 55 |
| End Bent 2 | Abutment | Reinforced Concrete Abutment | Reinforced Concrete Abutment | 53 |
| Bent 3 | Cap 1 | Reinforced Concrete Pier Cap | Reinforced Concrete Pier Cap | 45 |
| Bent 3 | Pile 1 | Reinforced Concrete Column | Reinforced Concrete Column | 1 |

Elements Verified

| Location | Name | Component | Element Name | Amount |
|----------|--------|----------------------------|----------------------------|--------|
| Bent 3 | Pile 2 | Reinforced Concrete Column | Reinforced Concrete Column | 1 |
| Bent 3 | Pile 3 | Reinforced Concrete Column | Reinforced Concrete Column | 1 |

General Inspection Notes

Span 2 Expansion Joint 1
COVERED BY ASPHALT WEARING SURFACE

Span 3 Expansion Joint 2
COVERED BY ASPHALT WEARING SURFACE

Span 4 Expansion Joint 3
COVERED BY ASPHALT WEARING SURFACE

National Bridge and NC Inspection Items

Structure Number: 110137

Inspection Date: 08/29/2023

National Bridge Inventory Items

| Item | Grade Scale | Grade |
|---|-------------|-------|
| Item 58: Deck | 0 - 9 , N | 6 |
| Item 59: Superstructure | 0 - 9 , N | 6 |
| Item 60: Substructure | 0 - 9 , N | 6 |
| Item 61: Channel and Channel Protection | 0 - 9 , N | N |
| Item 62: Culvert | 0 - 9 , N | N |
| Item 71: Waterway Adequacy | 0 - 9 , N | N |
| Item 72: Approach Roadway Alignment | 0 - 9 , N | 8 |

Note:
Items 58,59,60,62 reflect this inspection only.

For overall NBI coding grade, see cover sheet.

Note: If NBI Inspection Item is not present, code NBI item with "N"

NC SMU Inspection Items

| Item | Grade Scale | Grade | Maint. Qty. | Maint. Code |
|---------------------------|---------------|-------|-------------|-------------|
| Deck Debris | G, F, P, or C | G | 0 | 3376 |
| Drainage System | G, F, P, or C | G | 0 | 3332 |
| Utilities | G, F, P, or C | | | |
| Slope Protection | G, F, P, or C | G | 0 | 3352 |
| Scour | G, F, P, or C | | | |
| Wingwall | G, F, P, or C | G | 0 | 3350 |
| Field Scour Evaluation | | | | |
| Drift | G, F, P, or C | | 0 | 3366 |
| Fender System | G, F, P, or C | | 0 | 3364 |
| Movable Span Machinery | G, F, P, or C | | | |
| Response to Live Load | G, F, P, or C | G | | |
| Superstructure Paint Code | | B | | |

Note: If NC SMU Inspection Item is not present, leave NC SMU item blank

Inspection Information

| Item | Grade Scale | Grade |
|--|-------------|-------|
| Sign Noticed Issued | YES/NO | N |
| Priority Maintenance Request Submitted | YES/NO | Y |
| Inspection Time | Hours | 8 |
| Traffic Control Time | Hours | |
| Snooper Time | Hours | |
| Ladder Used | YES/NO | Y |
| Bucket Truck Used | YES/NO | N |
| Boat Used | YES/NO | N |
| Other Equipment Used | YES/NO | N |
| Portion of Structure in > 3' of water | YES/NO | N |

National Bridge and NC SMU Inspection Item Details

Structure Number: 110137

Inspection Date: 08/29/2023

| Item | General Comments and Misc Items | Grade | Maint Code | Qty. | 0 |
|----------------|--|-------|------------|------|---|
| Details | (PAR) northeast guardrail 25 foot from termination, impact damage (4 foot) | | | | |
| | (PAR) northwest guardrail 25 foot from end bent 1, impact damage (6 foot) | | | | |
| | (PAR) southeast guardrail termination, impact damage | | | | |



End Bent 2 Cap 1: along length of cap, multiple vertical cracks, up to full height x 1/32 inch



End Bent 2 Cap 1: IN BAY 4, 13 FOOT UP TO 1/8 INCH HORIZONTAL CRACK WITH DELAMINATED AREA 13 FOOT X 9 INCH X 7 INCH ON TOP AND SOUTH FACE.



End Bent 2 Abutment: along the length of the abutment, at bottom flange penetrations, spalls/delaminations (8 inch x 4 inch x 1.5 inch deep)



End Bent 2 Cap 1: 5 FOOT X UP TO 1/8 INCH HORIZONTAL CRACK UNDER BEAM 1



Span 4 Deck: (PAR) in bay 1 near end bent 2, transverse crack (hairline x full bay width) with efflorescence and rust stains; in bay 4 near midspan, transverse cracks (hairline x full bay width) with efflorescence buildup



Span 4 Deck: (PAR) in bay 1 near end bent 2, transverse crack (hairline x full bay width) with efflorescence and rust stains; in bay 4 near midspan, transverse cracks (hairline x full bay width) with efflorescence buildup



Span 4 Deck: BOTTOM OF DECK HAS MAP CRACKING UP TO 1/64 INCH WITH EFFLORESCENCE IN ALL BAYS.



Span 4 Deck: BOTTOM OF DECK EAST SIDE OF BEAM 5 OVER BENT 3 SPALL ALONG TOP FLANGE 7 INCH X 4 FOOT X 1 INCH DEEP.



Span 4 Deck: BOTTOM OF DECK WEST SIDE OF BEAM 1 OVER BENT 3 SPALL ALONG TOP FLANGE 7 INCH X 4 FOOT X 1 INCH DEEP.



Span 4 Beam 4: UP TO 1 FOOT X 6 INCH X 4 INCH SPALL WITH EXPOSED REINFORCING BAYS 3 AND 4 IN BENT 3 DIAPHRAGM.



Span 4 Beam 1: 8 INCH X 1 FOOT X 1 INCH SPALL WITH EXPOSED REINFORCING WITH ADJACENT CRACKS UP TO 1/8 INCH BAY 1 IN BENT 3 DIAPHRAGM.



Span 4 Far Bearing 1: surface rust/rust scale



(PAR) northeast guardrail 25 foot from termination, impact damage (4 foot)



(PAR) northwest guardrail 25 foot from end bent 1, impact damage (6 foot)



Span 4 Left Bridge Rail: along length of rail, multiple spalls, up to 20 inch x 3 inch x 1 inch deep, some with exposed rusted reinforcing, no loss noted



Span 4 Left Bridge Rail: previously repaired crack on post at 24 foot from bent 3



Span 4 Left Bridge Rail: PATCHED AREA 9 FOOT FROM END BENT 2 OVER A 6 FOOT LONG AREA.



Span 4 Left Bridge Rail: along the length of sidewalk, transverse cracks (hairline x full width) and map cracks (hairline) at random



Span 4 Wearing Surface: PREVIOUSLY REPAIRED SEALED MAP & TRANSVERSE CRACKS AT RANDOM THROUGHOUT.



Span 4 Wearing Surface: at end bent 2, transverse cracks (up to 1/32 inch x 15 foot)



Span 4 Wearing Surface: throughout asphalt wearing surface, transverse and longitudinal cracks (up to 1/32 inch x 5 foot) at random



Span 3 Right Bridge Rail: along length of rail, multiple spalls, up to 16 inch x 4 inch x 1 inch deep, some with exposed rusted reinforcing, no loss noted



Span 3 Wearing Surface: at bent 3, transverse cracks (up to 1/8 inch x full roadway width) with vegetation growth



Span 2 Right Bridge Rail: along length of rail, multiple spalls, up to 20 inch x 4 inch x 1 inch deep, some with exposed rusted reinforcing, no loss noted



Span 2 Wearing Surface: throughout asphalt wearing surface, transverse and longitudinal cracks (up to 1/32 inch x 5 foot) at random



(PAR) southeast guardrail termination, impact damage



End Bent 1 Abutment: along the length of the abutment, at bottom flange penetrations, spalls/delaminations (12 inch x 5 inch x 1 inch deep)



End Bent 1 Cap 1: 1 FOOT X 3 INCH X 1/2 INCH SPALL UNDER BEAM 2 WITH ADJACENT HORIZONTAL CRACK UP TO 1/16 INCH X 4 FOOT



End Bent 1 Cap 1: along length, multiple vertical cracks [up to full height x 1/32 inch]



End Bent 1 Cap 1: below beam 1, spall (1 foot x 3 inch x 1/2 inch deep)



Span 1 Deck: (PAR) EFFLORESCENCE WITH SOME BUILDUP AT RANDOM THROUGHOUT UNDERSIDE OF DECK.



Span 1 Deck: (PAR) EFFLORESCENCE WITH SOME BUILDUP AT RANDOM THROUGHOUT UNDERSIDE OF DECK.



Span 4 Beam 1: (PAR) at bent 3, corrosion with section loss: web adjacent to diaphragm (9/16 inch average remaining x 11 inch x 2 inch); right stiffener (0.15 inch average remaining x full width x 3 inch) with corrosion holes (up to 1/4 inch diameter); west face top flange, rust scale



Span 4 Beam 1: (PAR) at bent 3, corrosion with section loss: web adjacent to diaphragm (9/16 inch average remaining x 11 inch x 2 inch); right stiffener (0.15 inch average remaining x full width x 3 inch) with corrosion holes (up to 1/4 inch diameter); west face top flange, rust scale



Bent 3 Cap 1: SOUTH AND NORTH FACE (2) UP TO 8 FOOT X 1/16 INCH HORIZONTAL CRACK UNDER BAY 1, SIMILAR BAY 4.



Bent 3 Cap 1: (PAR) UNDERSIDE OF CAP, 10 FOOT UP TO 1/16 INCH LONGITUDINAL CRACK WITH RUST STAINING UNDER BEAM 2, SIMILAR UNDER BEAM 4.



Bent 3 Pile 1: East face 3 foot from ground, spall/delamination [12 inch x 3 inch x 1/2 inch deep]



Bent 3 Pile 1: (4) 6 FOOT X UP TO 1/32 INCH VERTICAL CRACKS BEGINNING AT BOTTOM OF CAP AT RANDOM THROUGHOUT.



Bent 3 Pile 2: 36 INCH X 24 INCH CRACKED DELAMINATION AREA WITH CRACKS UP TO 1/32 INCH ON WEST FACE NEAR GROUND LINE.



Span 3 Beam 2: at bent 3, corrosion with section loss: web adjacent to diaphragm (9/16 average remaining x 10 inch x 2 inch)



Span 4 Beam 2: at bent 3, corrosion with section loss: web adjacent to diaphragm (9/16 average remaining x 10 inch x 2 inch)



Span 3 Beam 2 - Far Bearing 2: surface rust



Span 3 Beam 3: at bent 3, pitting with corrosion reactivating: web (up to 1/8 inch deep x 10 inch x 6 inch)



Span 3 Beam 3 - Far Bearing 3: rust scale



Span 4 Beam 3: at bent 3, pitting with corrosion reactivating: web adjacent to diaphragm (1/16 inch deep x 10 inch x 2 inch); left stiffener (1/16 inch deep x full width x 2 inch)



Span 3 Beam 5: at bent 3, corrosion with section loss: web adjacent to diaphragm (9/16 average remaining x 10 inch x 2.5 inch); left stiffener (0.25 inch average remaining x full width x 2.5 inch)



Span 4 Beam 5: at bent 3, pitting with corrosion reactivating: web adjacent to diaphragm (up to 1/16 inch deep x 10 inch x 2.5 inch); bottom flange (1/8 inch deep x 1 foot)



Span 4 Beam 5: at bent 3, pitting with corrosion reactivating: web adjacent to diaphragm (up to 1/16 inch deep x 10 inch x 2.5 inch); bottom flange (1/8 inch deep x 1 foot)



Span 4 Near Bearing 5: (PAR) right anchor rod, sheared/missing



Span 3 Deck: SPAN 3 BOTTOM OF DECK HAS SCATTERED AREAS IN ALL BAYS OF MAP CRACKING WITH EFFLORESCENCE



Span 3 Beam 1 - Protective System: over right travel lane, impact scrapes



Span 3 Beam 1: at bent 2, pitting with corrosion reactivating: web adjacent to diaphragm (1/16 inch deep x 10 inch x 2 inch)



Span 3 Beam 1: at bent 2, bay 1 end diaphragm, (2) spall/delamination (up to 3 foot x 10 inch x 2 inch deep) with exposed rusted rebar



Span 2 Beam 1: at bent 2, pitting with corrosion reactivating: web adjacent to diaphragm (1/16 inch deep x 10 inch x 2 inch)



Span 3 Beam 2: (PAR) at bent 2, corrosion with section loss: web adjacent to diaphragm (1/2 average remaining x 10 inch x 1.5 inch)



Span 2 Beam 2: at bent 2, corrosion with section loss: web adjacent to diaphragm (5/8 average remaining x 6 inch x 1 inch)



Span 3 Beam 3: at bent 2, web adjacent to diaphragm, rust scale (8 inch)



Bent 2 Cap 1: (PAR) 3 FOOT X UP TO 7 INCH X 8 INCH X 3 INCH DEEP SPALL WITH EXPOSED REINFORCING WITH APPROXIMATELY 25 PERCENT LOSS AND ADJACENT DELAMINATION UNDER BAY 2 NORTH AND BOTTOM FACES.



Bent 2 Cap 1: (PAR) 3 FOOT X UP TO 7 INCH X 8 INCH X 3 INCH DEEP SPALL WITH EXPOSED REINFORCING WITH APPROXIMATELY 25 PERCENT LOSS AND ADJACENT DELAMINATION UNDER BAY 2 NORTH AND BOTTOM FACES.



Bent 2 Cap 1: (PAR) 3 FOOT X UP TO 1/8 INCH LONGITUDINAL CRACK WITH RUST STAINING WITH ADJACENT DELAMINATIONS UP TO 5 FOOT X FULL WIDTH SOUTH AND BOTTOM FACES UNDER BAY 3



Bent 2 Cap 1: (PAR) BENT 2 NORTH FACE OF CAP HAS A HORIZONTAL CRACK [UP TO 1/8 INCH] WITH RUST STAIN WITH ADJACENT DELAMINATED AREA ALONG TOP EDGE OF CAP BETWEEN BEAM 4 AND BEAM 5 5 INCH TO 20 INCH DOWN FACE 88 INCH LONG AND 4 INCH ON TOP.



Bent 2 Pile 3: BENT 2 SOUTHEAST CORNER OF COL 3 HAS SPALL AREA 38 INCH ABOVE THE GROUND LINE AND 5 INCH X 5 INCH X 12 INCH X 1 INCH DEEP



Bent 2 Cap 1: BENT 2 SOUTH AND NORTH FACES OF CAP HAS SCATTERED HORIZONTAL CRACKS UP TO 1/16 INCH X 8 FOOT IN TOP AND BOTTOM EDGE FROM BEAM 1 TO BEAM 2 AND BEAM 4 TO BEAM 5.



Span 2 Beam 5: at bent 2, corrosion with section loss: web (5/8 average remaining x 10 inch x full height); left stiffener (0.30 inch average remaining x full width x full height)



Span 1 Beam 1: at bent 1, corrosion with section loss: web adjacent to diaphragm (9/16 average remaining x 3.5 inch x 8 inch)



Span 1 Beam 1: at bent 1, bay 1 diaphragm, (2) spall/delamination (up to 2 foot x 8 inch x 2.5 inch deep) with exposed rusted rebar



Span 1 Beam 1: at bent 1, bay 1 diaphragm, (2) spall/delamination (up to 2 foot x 8 inch x 2.5 inch deep) with exposed rusted rebar



Bent 1 Cap 1: [PAR] 32 INCH X 15 INCH X 3 INCH SPALL WITH EXPOSED PRIMARY REINFORCING [SECTION LOSS UP TO 1/8 INCH] WITH ADJACENT DELAMINATION ON TOP NORTH FACE UNDER BAY 1.



Bent 1 Cap 1: UP TO 14 FOOT X 1/8 INCH HORIZONTAL CRACKS AT RANDOM THROUGHOUT ON SOUTH FACE AND UNDERSIDE



Bent 1 Cap 1: [PAR] 4 INCH X 7 INCH X 1 INCH NORTH FACE OF CAP HAS A SPALL AREA UNDER BEAM 3 WITH PRIMARY REBAR EXPOSED [SECTION LOSS UP TO 1/8 INCH]



Bent 1 Cap 1: underside of cap, between columns 1 and 3, spalls/delaminations (up to 12 foot x full width x 1 inch deep) with cracks (up to 1/8 inch)



Bent 1 Cap 1: underside of cap, between columns 1 and 3, spalls/delaminations (up to 12 foot x full width x 1 inch deep) with cracks (up to 1/8 inch)



Bent 1 Cap 1: (PAR) 10 INCH X 48 INCH X 2 INCH DEEP SPALL/DELAMINATION WITH EXPOSED RUSTED REBAR NEAR TOP OF CAP, NORTH FACE BELOW BEAM 2



Bent 1 Cap 1: 2 FOOT X 6 FOOT CRACKED DELAMINATED AREA IN BAY 3 ON NORTH FACE.



Span 1 Beam 5: at bent 1, corrosion with section loss: web adjacent to diaphragm (9/16 average remaining x 10 inch x 2 inch); left stiffener adjacent to diaphragm (0.25 inch average remaining x full width x 2 inch); left stiffener at base (0.27 inch average remaining x full width x 2 inch); top flange, rust scale (1 foot)



Span 1 Beam 5: at bent 1, corrosion with section loss: web adjacent to diaphragm (9/16 average remaining x 10 inch x 2 inch); left stiffener adjacent to diaphragm (0.25 inch average remaining x full width x 2 inch); left stiffener at base (0.27 inch average remaining x full width x 2 inch); top flange, rust scale (1 foot)



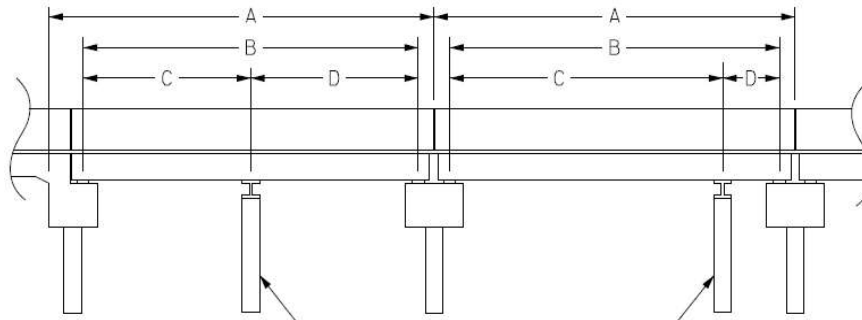
Span 3 Deck: (PAR) SPAN 3 BOTTOM OF LEFT OVERHANG HAS A SURFACE SPALL AREA OVER BENT 2, 4 INCH X 12 INCH X 3/4 INCH DEEP WITH REBAR EXPOSED.

Structure Data Worksheet

Span Profile

County: **BURKE**

Structure Number: **110137**



A: SPAN LENGTH
 B: BEARING TO BEARING
 C: DISTANCE FROM NEAR BEARING
 D: DISTANCE TO FAR BEARING

| Span Number | Span Length | Bearing to Bearing | Crutch/ Helper Bent | Distance to Near Bearing | Distance to Far Bearing |
|-------------|-------------|--------------------|---------------------|--------------------------|-------------------------|
| 1 | 75.000 | 72.833 | | | |
| 2 | 75.000 | 73.667 | | | |
| 3 | 75.000 | 73.667 | | | |
| 4 | 52.000 | 49.833 | | | |

Structure Number: 110137

Span: 2

Route Name: I 40 E



roadway under span 2, looking east

| | | | | | | |
|---|---------------------------|--|---|---------------------------------|-----------------------------|--|
| Route Number: 11000400 | | Route Name: I 40 E | | | Reference Feature: H | |
| Minimum Vertical Clearance 17.540 feet | | Maximum Minimum Vertical Clearance 18.470 feet | | | | |
| Total Horizontal Clearance 42.770 feet | | Lateral Clearances: Left: 13.760 feet Right: 16.710 feet | | | | |
| <input checked="" type="checkbox"/> Base Highway Network | | LRS Inventory Route, Sub Route Number 10040 | | | | |
| Milepost: 104.760 | Number of Lanes: 2 | ADT: 25000 | Year of ADT: 2019 | Percentage of Trucks: 16 | | |
| <input checked="" type="checkbox"/> National Highway System | | | <input type="checkbox"/> STRAHNET Highway Designator | | | |
| Functional Classification 11 Local Principal Arterial - Interstate | | Direction of Traffic: 1 1 - way traffic | | | | |

Structure Number: 110137

Span: 3

Route Name: I 40 WBL



roadway under span 3, looking west

| | | | | | | |
|---|---------------------------|--|---|---------------------------------|-----------------------------|--|
| Route Number: 11000400 | | Route Name: I 40 WBL | | | Reference Feature: H | |
| Minimum Vertical Clearance 15.200 feet | | Maximum Minimum Vertical Clearance 15.960 feet | | | | |
| Total Horizontal Clearance 43.430 feet | | Lateral Clearances: Left: 13.790 feet Right: 16.230 feet | | | | |
| <input checked="" type="checkbox"/> Base Highway Network | | LRS Inventory Route, Sub Route Number 10040 | | | | |
| Milepost: 104.760 | Number of Lanes: 2 | ADT: 25000 | Year of ADT: 2019 | Percentage of Trucks: 16 | | |
| <input checked="" type="checkbox"/> National Highway System | | | <input type="checkbox"/> STRAHNET Highway Designator | | | |
| Functional Classification 11 Local Principal Arterial - Interstate | | Direction of Traffic: 1 1 - way traffic | | | | |

Bridge Inspection Field Sketch



| | | | |
|-----------------|---------------|---------------|---------------|
| Roadway | 21.583ft Wide | 2 Paved Lanes | Looking North |
| Left Shoulder | 3.5ft Wide | 0.5ft Paved | 3ft Unpaved |
| Right Shoulder | 5ft Wide | 1ft Paved | 4ft Unpaved |
| Left Guardrail | | | |
| Right Guardrail | | | |

approximately 250 feet from end bent 1

Title
APPROACH ROADWAY SKETCH

Description
LOOKING NORTH

Structure No: 110137

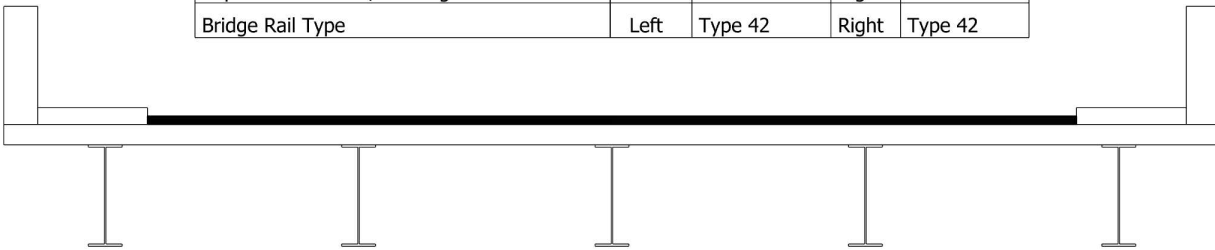
Drawn By: HABonilla

Date: 8/29/2023

Filename: S000906000220.wes

Bridge Inspection Field Sketch

| | | | |
|-------------------------------------|------|-----------------|----------|
| Deck Width/Out to Out | 36ft | Between Rails | 34.417ft |
| Clear Roadway | 28ft | Wearing Surface | 3in |
| Median Width | | Median Height | |
| Curb Height | | Left | 7in |
| | | Right | 7in |
| Sidewalk Width | | Left | 3.25ft |
| | | Right | 3.25ft |
| Clear Roadway (Rail to Median) | | Left | |
| | | Right | |
| Guardrail Width | | Left | 9in |
| | | Right | 9in |
| Top of Rail to Deck/Wearing Surface | | Left | 3.5ft |
| | | Right | 3.5ft |
| Bridge Rail Type | | Left | Type 42 |
| | | Right | Type 42 |



| | | | |
|-------------------------------------|---------|-------------------|-----|
| Measurements for Span # | 1 | ALL SPANS SIMILAR | |
| Deck Thickness | 7.25in | Left Overhang | 3ft |
| Top of Rail to Bottom of Beam (Avg) | 7.104ft | Right Overhang | 3ft |

| Beam # | Beam Type | Width | Height | Spacing | From |
|--------|--------------|-------|--------|---------|-------------------|
| 1 | Plate Girder | 12in | 36in | 3ft | Left Edge of Deck |
| 2 | Plate Girder | 12in | 36in | 7.5ft | Beam 1 |
| 3 | Plate Girder | 12in | 36in | 7.5ft | Beam 2 |
| 4 | Plate Girder | 12in | 36in | 7.5ft | Beam 3 |
| 5 | Plate Girder | 12in | 36in | 7.5ft | Beam 4 |

BEAM DIMENSION: between flanges 34-5/16"; bottom flange 7/8" thick x 12" wide; web 11/16" thick
 COVER PLATE DIMENSIONS: 10-1/2" wide x 1" thick

Title
TYPICAL SECTION SKETCH

Description
LOOKING NORTH

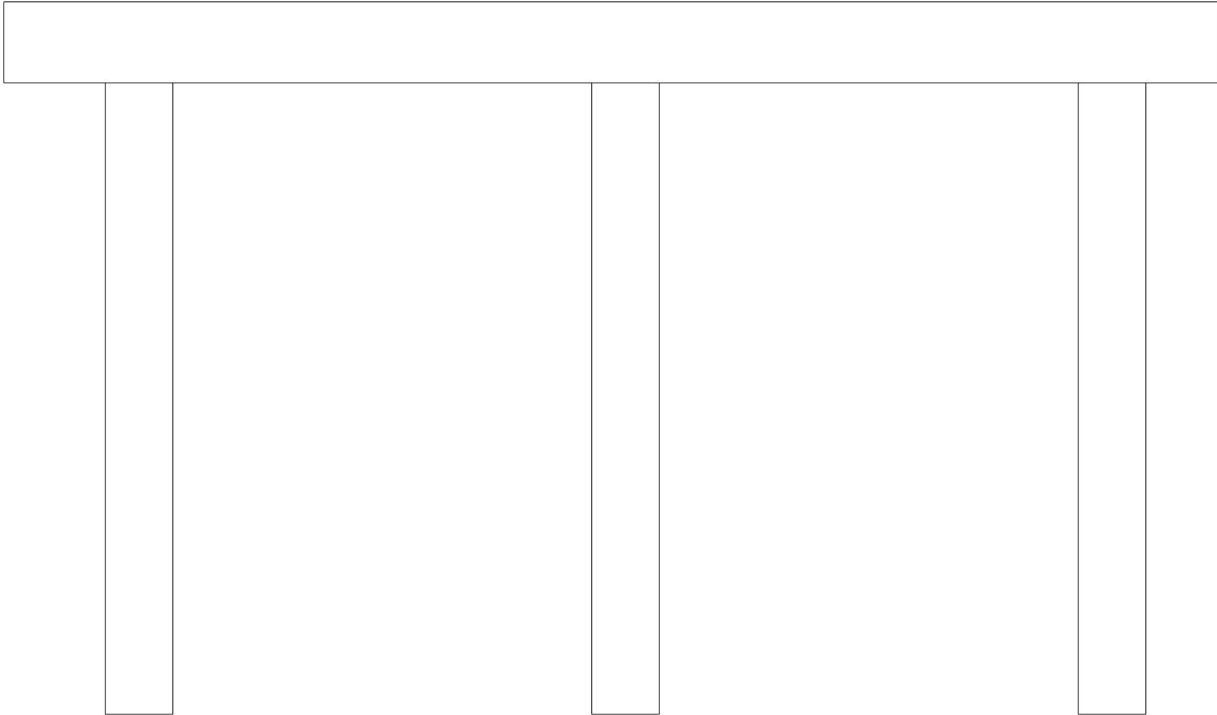
Structure No: 110137

Drawn By: HABonilla

Date: 8/29/2023

Filename: S000906000221.wes

Bridge Inspection Field Sketch



| Caps | | | | | | | |
|-------|--------|------------------------------|---------|------------------|-------------|-------------------------|--------------------------|
| # | Name | Type | Length | Width | Height | Left Beam to End of Cap | Right Beam to End of Cap |
| 1 | Cap 1 | Reinforced Concrete Pier Cap | 45ft | 30in | 36in | 1.333ft | 1.333ft |
| Piles | | | | | | | |
| # | Name | Type | Spacing | From | Height/Diam | Width | Length |
| 1 | Pile 1 | Reinforced Concrete Column | 5ft | Left End of Bent | 30in | 30in | 25ft |
| 2 | Pile 2 | Reinforced Concrete Column | 18ft | Pile 1 | 30in | 30in | 25ft |
| 3 | Pile 3 | Reinforced Concrete Column | 18ft | Pile 2 | 30in | 30in | 25ft |

Title
BENT SKETCH

Description
LOOKING NORTH

Structure No: 110137

Drawn By: HABonilla

Date: 8/29/2023

Filename: S000906000222.wes



west profile looking east



bent 2



superstructure underside



intermediate diaphragm



end diaphragm



roadway under span 3, looking west (I-40 westbound)



east profile looking west



beams over bent



end bent 2 and slope protection



northeast wingwall



end bearing assembly



northwest wingwall



bent 3



northeast guardrail termination



northeast guardrail



northwest guardrail termination



northwest guardrail



northwest guardrail transition



north approach looking south



bridge number



northwest guardrail attachment



northeast guardrail attachment



end bent 2 asphalt



north approach looking north



bent 3 asphalt



roadway looking east



bent 2 asphalt



roadway looking west



south approach looking south



bent 1 asphalt



southeast guardrail attachment



southeast guardrail transition



southeast guardrail



end bent 1 asphalt



southwest guardrail attachment



southwest guardrail



southwest guardrail termination



southeast guardrail termination



asphalt wearing surface



left bridge rail



right bridge rail



southeast wingwall



end bent 1 and slope protection



bent 1



southeast wingwall



roadway under span 2, looking east (I-40 eastbound)



typical coverplate termination



ladder used



interior bearing assembly



south approach looking north